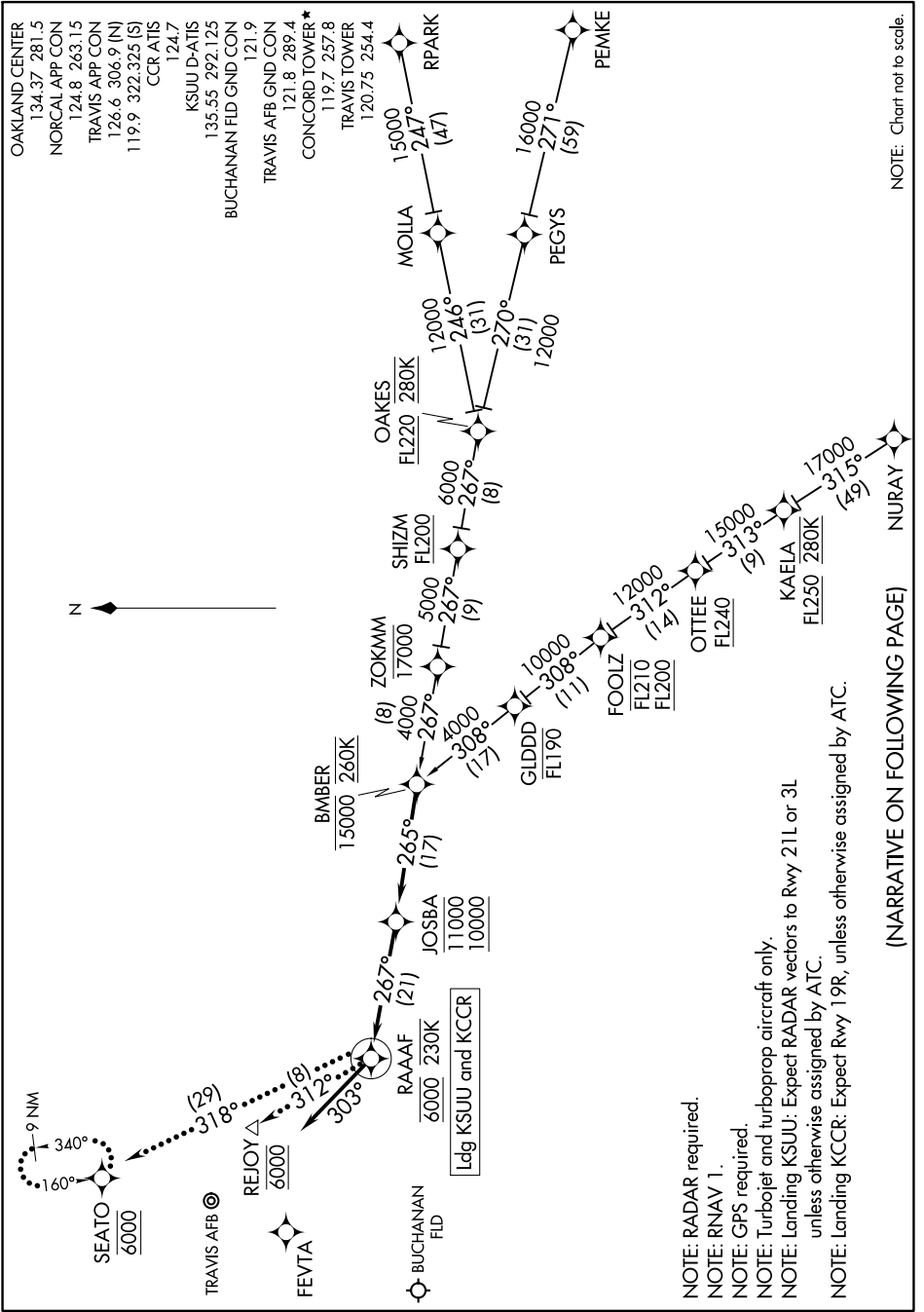


# BMBER ONE ARRIVAL (RNAV)

AL-5320 (FAA)

CONCORD, CALIFORNIA

SW-2, 11 JUL 2024 to 08 AUG 2024



NOTE: Chart not to scale.

NOTE: RADAR required.

NOTE: RNAV 1.

NOTE: GPS required.

NOTE: Turbojet and turboprop aircraft only.

NOTE: Landing KSUU: Expect RADAR vectors to Rwy 21L or 3L

unless otherwise assigned by ATC.

NOTE: Landing KCCR: Expect Rwy 19R, unless otherwise assigned by ATC.

(NARRATIVE ON FOLLOWING PAGE)

# BMBER ONE ARRIVAL (RNAV)

CONCORD, CALIFORNIA

SW-2, 11 JUL 2024 to 08 AUG 2024