

APP CRS <b>023°</b>	Rwy Idg TDZE Apt Elev	<b>N/A</b> <b>N/A</b> <b>1040</b>
------------------------	-----------------------------	---

# RNAV (GPS)-B

JAFFREY AIRFIELD SILVER RANCH (A/FN)

RNP APCH-GPS.

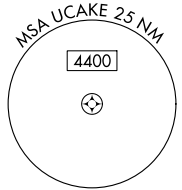
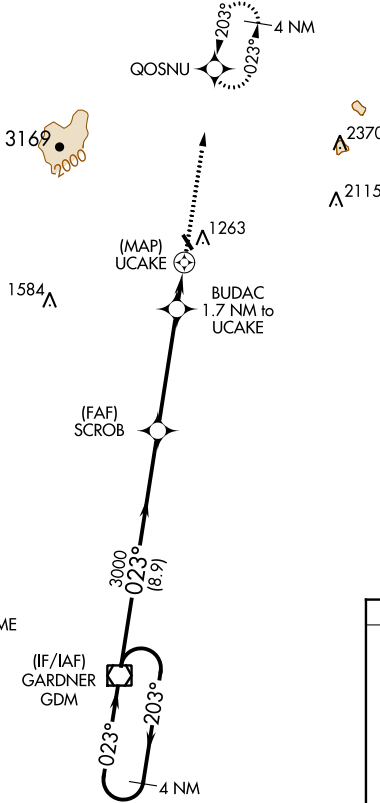
**▼** When local altimeter setting not received, use Keene altimeter setting and increase all MDA 120 feet and all Cats visibility 1/4 mile. Procedure NA at night.  
**▲** Rwy 16 and 34 helicopter visibility reduction below 1 SM NA.

MISSED APPROACH: Climb to 3400 direct QOSNU and hold.

ASOS  
**135.875**

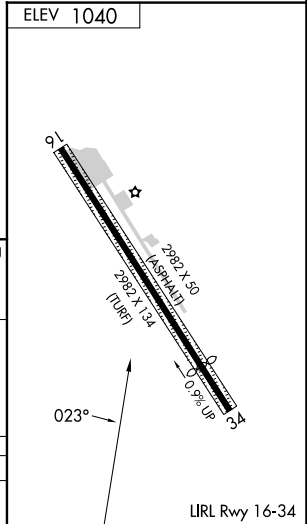
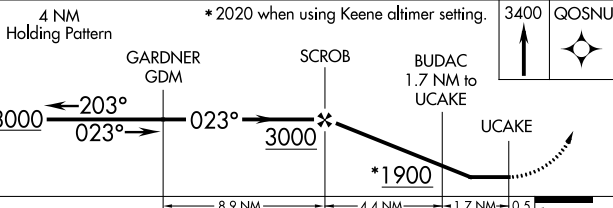
BOSTON CENTER  
**123.75 338.2**

UNICOM  
**122.8 (CTAF)**



NoPT for arrivals at GDM VOR/DME on airway radials 179 CW 263.

ELEV 1040



CATEGORY	A	B	C	D
CIRCLING	1760-1 720 (800-1)	1820-1 780 (800-1)	NA	

NE-1, 11 JUL 2024 to 08 AUG 2024

NE-1, 11 JUL 2024 to 08 AUG 2024