

CONRA THREE DEPARTURE

SC-3, 11 JUL 2024 to 08 AUG 2024

DEPARTURE ROUTE DESCRIPTION

TAKEOFF RUNWAY 1: Climb on assigned heading for RADAR vectors to CONRA INT, maintain 3500. Thence. . . .

TAKEOFF RUNWAY 19: Climb on heading 192° to 1900 before turning east. Then climb on assigned heading for RADAR vectors to CONRA INT, maintain 3500. Thence. . . .

. . . .(transition), expect filed altitude 10 minutes after departure.

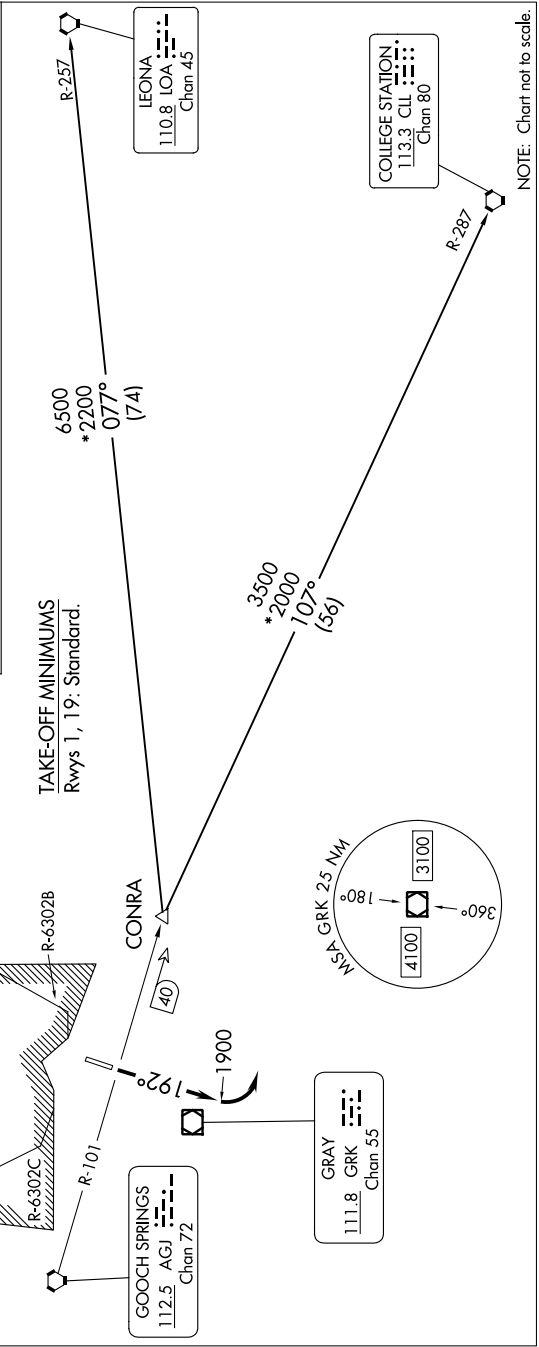
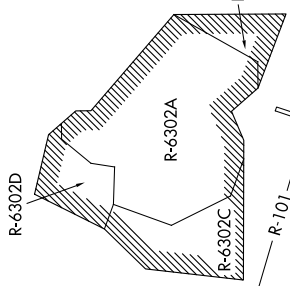
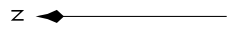
COLLEGE STATION TRANSITION (CONRA3.CLI): From over CONRA INT on CLL R-287 to CLL VORTAC.

LEONA TRANSITION (CONRA3.LOA): From over CONRA INT on LOA R-257 to LOA VORTAC.

RADAR required.

TOP ALTITUDE:
3500

AWOS-3PT
128.575
CLNC DEL
121.7
CTAF
122.7
GRAY DEP CON
120.075 323.15



NOTE: Chart not to scale.

CONRA THREE DEPARTURE

SC-3, 11 JUL 2024 to 08 AUG 2024