

KILLEEN, TEXAS

AL-5344 (FAA)

22363

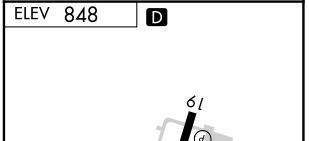
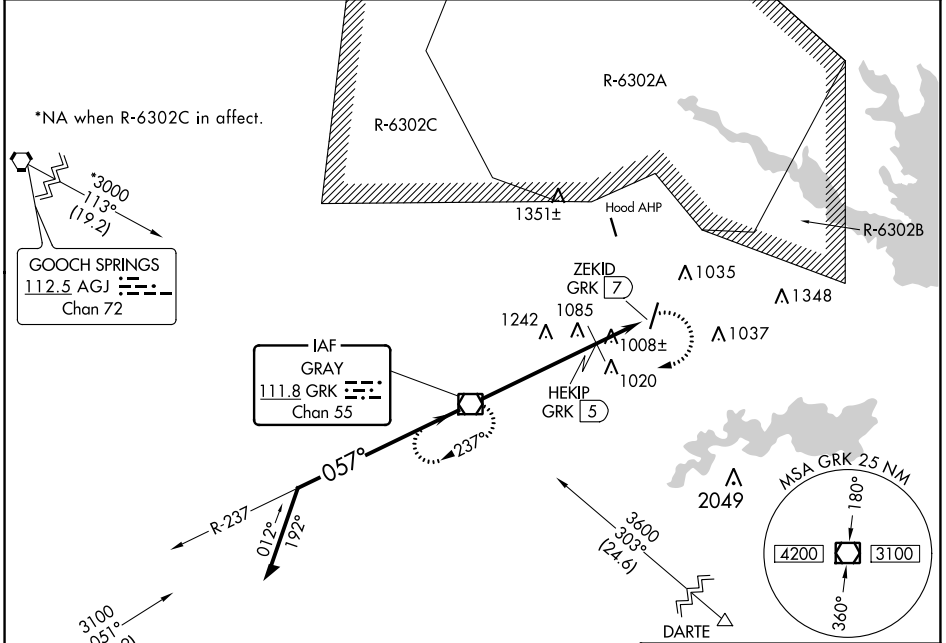
VOR/DME GRK <b>111.8</b> Chan 55	APP CRS <b>057°</b>	Rwy Idg TDZE Apt Elev <b>848</b>	N/A N/A 848
--	------------------------	--	-------------------

VOR-A  
SKYLARK FLD (IL)E

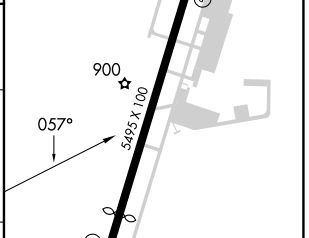
**NA** Circling Rwy 19 NA at night.  
When local altimeter setting not received, use Robert Gray AAF altimeter setting and increase all MDA 60 feet.

MISSED APPROACH: Climbing right turn to 3000 direct GRK VOR/DME and hold.

AWOS-3PT <b>128.575</b>	GRAY APP CON <b>120.075 323.15</b>	CLNC DEL <b>121.7</b>	UNICOM <b>122.7 (CTAF)</b>
----------------------------	---------------------------------------	--------------------------	-------------------------------



Remain within 10 NM	GRK VOR/DME	3000 GRK
237°	057°	3000 GRK
#1680 when using Robert Gray AAF altimeter setting.	2000	#1620
	5 NM	2 NM



CATEGORY	A	B	C	D
<b>CIRCLING</b>	1620-1 772 (800-1)	1620-1¼ 772 (800-1¼)	1620-2¼ 772 (800-2¼)	NA
HEKIP FIX MINIMUMS (DME REQUIRED)				
<b>CIRCLING</b>	1320-1 472 (500-1)	1360-1 512 (600-1)	1440-1½ 592 (600-1½)	NA

FAF to MAP 7 NM					
Knots	60	90	120	150	180
Min:Sec	7:00	4:40	3:30	2:48	2:20

KILLEEN, TEXAS  
Amdt 4A 08NOV18

31°05'N-97°41'W

SKYLARK FLD (IL)E  
VOR-A

SC-3, 11 JUL 2024 to 08 AUG 2024

SC-3, 11 JUL 2024 to 08 AUG 2024