

APP CRS	Rwy Idg	7508
298°	TDZE	3011
	Apt Elev	3011

RNAV (GPS) RWY 30

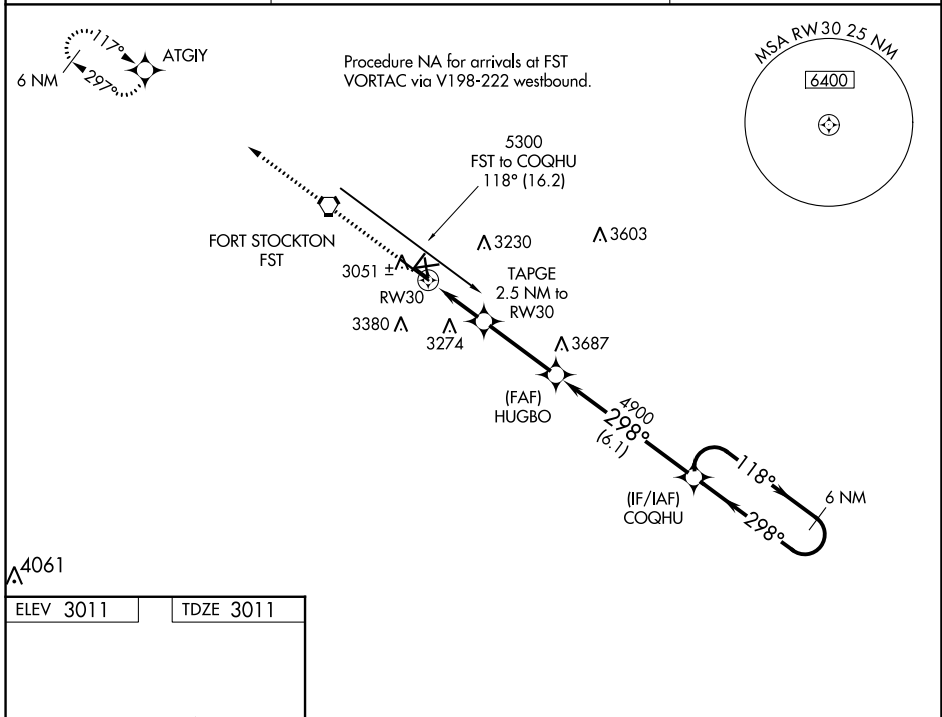
FORT STOCKTON-PECOS COUNTY (FST)

RNP APCH.

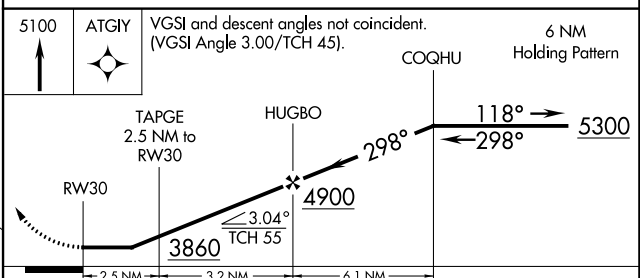
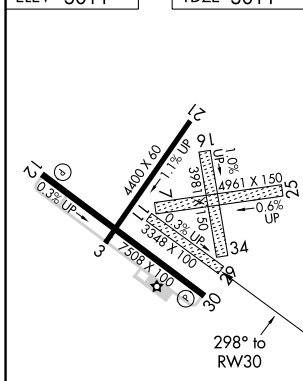
▼ Rwy 30 helicopter visibility reduction below 1 SM NA. When local altimeter setting not received, use Pecos altimeter setting and increase all MDA 160 feet, increase LNAV Cat C/D visibility 1/2 mile, Circling Cat C visibility 3/4 mile, Cat D visibility 1/2 mile. Circling NA to Rwys 7-25, 11-29 and 16-34. Straight-in Rwy 30 NA at night, Circling Rwy 3, 21, 30 NA at night.

▲ MISSED APPROACH: Climb to 5100 direct ATGIY and hold.

ASOS 118.525	ALBUQUERQUE CENTER 135.875 292.15	UNICOM 122.8 (CTAF) 0
------------------------	---	---------------------------------



4061	ELEV 3011	TDZE 3011
-------------	------------------	------------------



CATEGORY	A	B	C	D
LNAV MDA	3500-1	489 (500-1)	3500-1 1/4 489 (500-1 1/4)	3500-1 1/2 489 (500-1 1/2)
CIRCLING	3540-1 529 (600-1)	3660-1 649 (700-1)	3740-2 729 (800-2)	3760-2 1/2 749 (800-2 1/2)

SC-3, 11 JUL 2024 to 08 AUG 2024

SC-3, 11 JUL 2024 to 08 AUG 2024