

WAAS CH <b>62904</b> <b>W25A</b>	APP CRS <b>245°</b>	Rwy Idg TDZE Apt Elev	<b>5000</b> <b>993</b> <b>993</b>
--	------------------------	-----------------------------	---

# RNAV (GPS) RWY 25

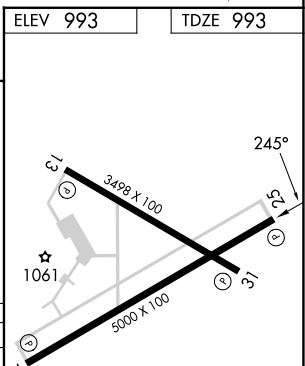
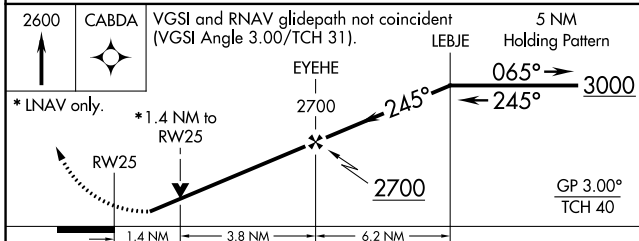
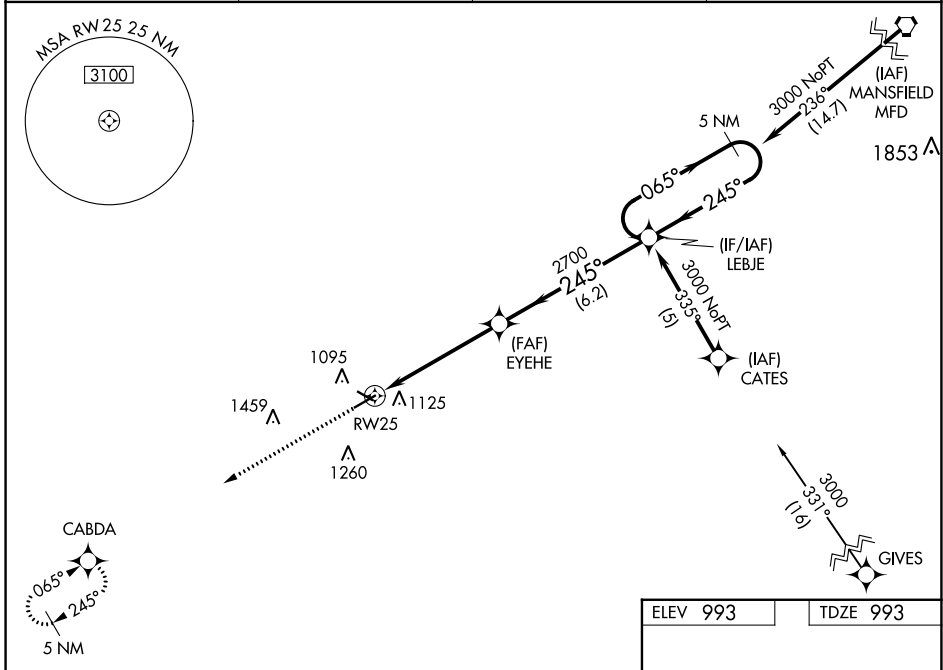
MARION MUNI (MNN)

RNP APCH.

**⚠** For uncompensated Baro-VNAV systems, LNAV/VNAV NA below -16°C (4°F) or above 54°C (130°F). Baro-VNAV and VDP NA when using Ohio State University altimeter setting. Rwy 25 helicopter visibility reduction below 3/4 SM NA. When local altimeter setting not received, use Ohio State University altimeter setting and increase LPV DA to 1421 feet, increase LNAV/VNAV DA to 1530 feet; increase all MDAs 100 feet and visibility Cat C/D 1/4 SM.

MISSED APPROACH:  
Climb to 2600 direct  
CABDA and hold.

ASOS <b>119.975</b>	CLEVELAND APP CON * <b>128.35 360.65</b>	CLNC DEL <b>126.8</b>	UNICOM <b>122.8 (CTAF) 0</b>
------------------------	---	--------------------------	---------------------------------



CATEGORY	A	B	C	D
LPV DA		1334-1¼	341 (400-1¼)	
LNAV/VNAV DA		1443-1½	450 (500-1½)	
LNAV MDA	1460-1	467 (500-1)	1460-1½	467 (500-1½)
CIRCLING	1480-1 487 (500-1)	1500-1 507 (600-1)	1700-2 707 (800-2)	1820-2¾ 827 (900-2¾)

ELEV 993	TDZE 993
REIL Rws 7, 13, 25 and 31 0	
MIRL Rws 7-25 and 13-31 0	

EC-2, 11 JUL 2024 to 08 AUG 2024

EC-2, 11 JUL 2024 to 08 AUG 2024