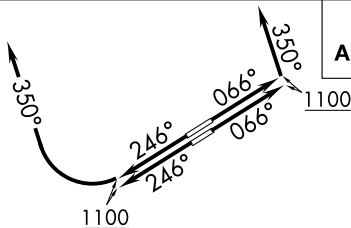


CAVVS FOUR DEPARTURE (RNAV)

ATIS 125.25
CLNC DEL
339.8
121.9 (when tower closed)
GND CON 121.9 339.8
LAKEFRONT TOWER ★
124.3 (CTAF) 339.8
CLEVELAND DEP CON
125.35 346.325

**TOP ALTITUDE:
ASSIGNED BY ATC**



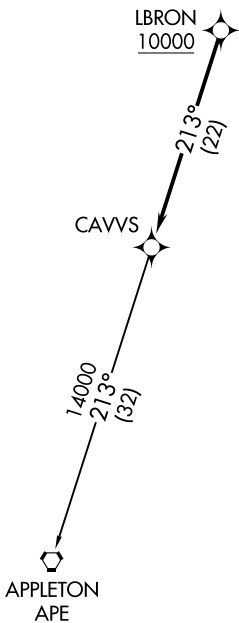
NOTE: RADAR required.
NOTE: RNAV 1.
NOTE: DME/DME/IRU or
GPS required.

TAKEOFF MINIMUMS:

Rwys 6L/R, 24R: Standard with a minimum climb
of 500' per NM to 1100.
Rwy 24L: 400-1 $\frac{3}{4}$ or standard with minimum
climb of 757' per NM to 1000.

EC-2, 11 JUL 2024 to 08 AUG 2024

EC-2, 11 JUL 2024 to 08 AUG 2024



DEPARTURE ROUTE DESCRIPTION

TAKEOFF RUNWAYS 6L/R: Climb on heading 066° to 1100, then on heading 350° or as assigned by ATC, maintain 2000 (do not climb above 2000) for RADAR vectors to cross LBRON at or above 10000, thence....

TAKEOFF RUNWAYS 24L/R: Climb on heading 246° to 1100, then right turn heading 350° or as assigned by ATC, maintain 2000 (do not climb above 2000) for RADAR vectors to cross LBRON at or above 10000, thence....

....on track 213° to CAVVS, then on (transition).
Maintain altitude assigned by ATC, expect
filed altitude ten minutes after departure.

APPLETON TRANSITION (CAVVS4.APE)

NOTE: Chart not to scale.

CAVVS FOUR DEPARTURE (RNAV)