

APP CRS <b>337°</b>	Rwy Idg TDZE Apt Elev	<b>4742</b> <b>30</b> <b>32</b>
------------------------	-----------------------------	---------------------------------------

# RNAV (GPS) RWY 34

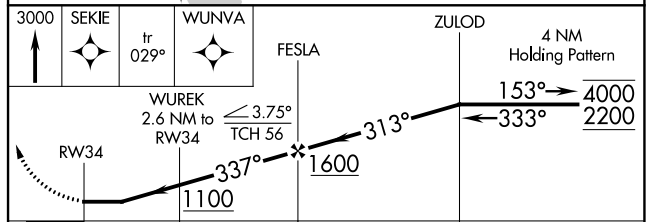
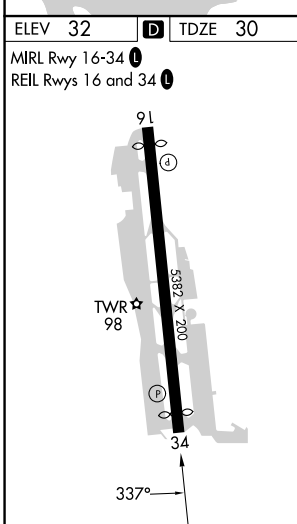
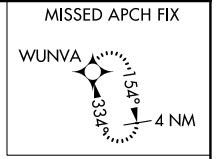
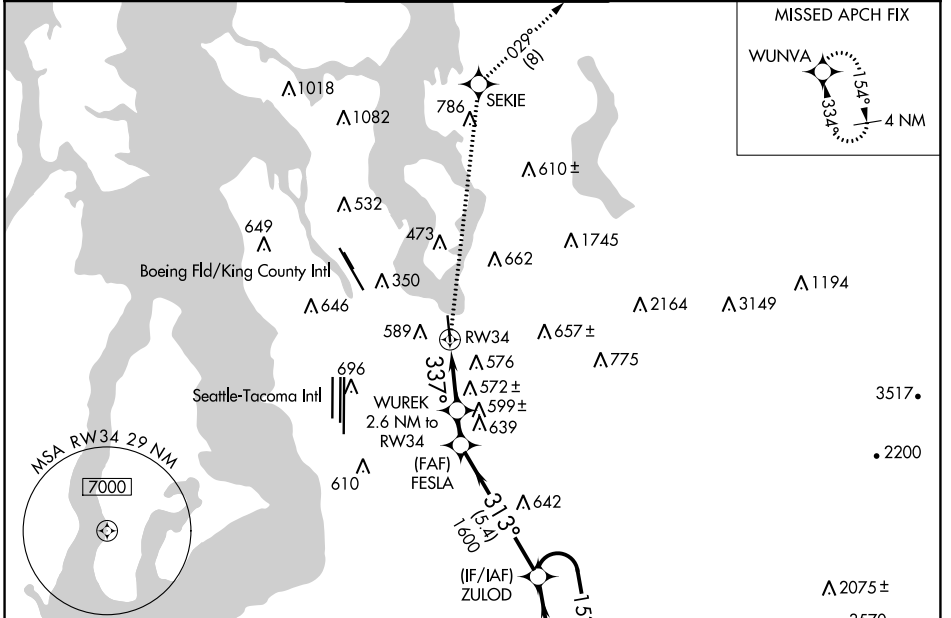
RENTON MUNI (RNT)

RNP APCH-GPS.

**⚠** Circling NA west of Rwy 16-34. Rwy 34 helicopter visibility reduction below 1 SM NA. Straight-in Rwy 34 at night, Circling Rwy 34 at night, operational VGSI required, remain on or above VGSI glidepath until threshold.

MISSED APPROACH: Climb to 3000 direct SEKIE and on track 029° to WUNVA and hold.

ATIS <b>126.95</b>	SEATTLE APP CON <b>123.9 338.2 (RWY 16)</b> <b>125.9 306.9 (RWY 34)</b>	RENTON TOWER* <b>124.7 (CTAF) 0 256.9</b>	GND CON <b>121.6 256.9</b>	UNICOM <b>122.95</b>
-----------------------	---	--	-------------------------------	-------------------------



CATEGORY	A	B	C	D
LNAV MDA	840-1 810 (900-1)	840-1¼ 810 (900-1¼)	840-2½ 810 (900-2½)	NA
<b>C</b> CIRCLING	860-1¼ 828 (900-1¼)	920-1¼ 888 (900-1¼)	1000-3 968 (1000-3)	NA

NW-1, 11 JUL 2024 to 08 AUG 2024

NW-1, 11 JUL 2024 to 08 AUG 2024