

WAAS CH <b>48921</b> <b>W17A</b>	APP CRS <b>175°</b>	Rwy Idg TDZE <b>840</b> Apt Elev <b>845</b>	<b>5014</b> <b>840</b> <b>845</b>
--	------------------------	---	---

# RNAV (GPS) RWY 17

ARDMORE DOWNTOWN EXEC (1F)(J)

RNP APCH-GPS.

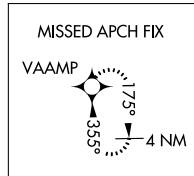
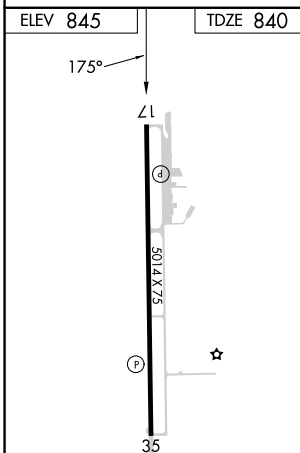
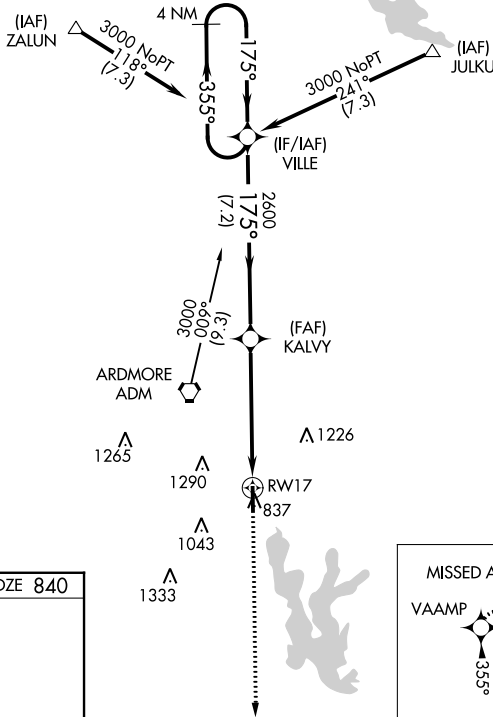
**⚠** Rwy 17 helicopter visibility reduction below 1 SM NA.

MISSED APPROACH: Climb to 3000 direct VAAMP and hold.

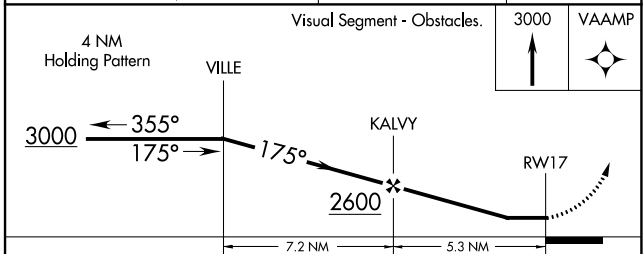
AWOS-3  
**118.15**

FORT WORTH CENTER  
**124.75 323.0**

UNICOM  
**122.7 (CTAF) (J)**



2584 ⚠



CATEGORY	A	B	C	D
LP MDA	1360-1	520 (600-1)	1360-1½	520 (600-1½)
LNVA MDA	1360-1	520 (600-1)	1360-1½	520 (600-1½)
CIRCLING	1400-1	555 (600-1)	1600-2¼ 755 (800-2¼)	1640-2½ 795 (800-2½)

MIRL Rwy 17-35 (J)  
REIL Rwy 17 and 35 (J)

SC-1, 11 JUL 2024 to 08 AUG 2024

SC-1, 11 JUL 2024 to 08 AUG 2024