


LOC/DME I-PQL <b>110.1</b> Chan <b>38</b>	APP CRS <b>168°</b>	Rwy Idg <b>6501</b> TDZE <b>17</b> Apt Elev <b>17</b>
---	------------------------	---

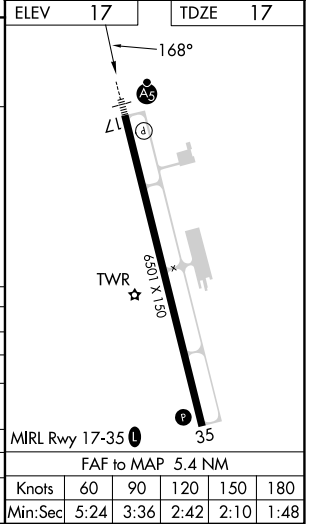
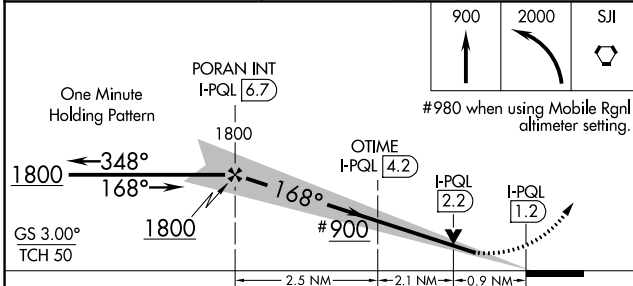
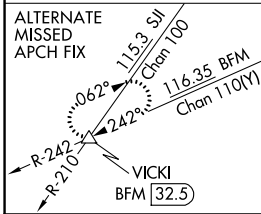
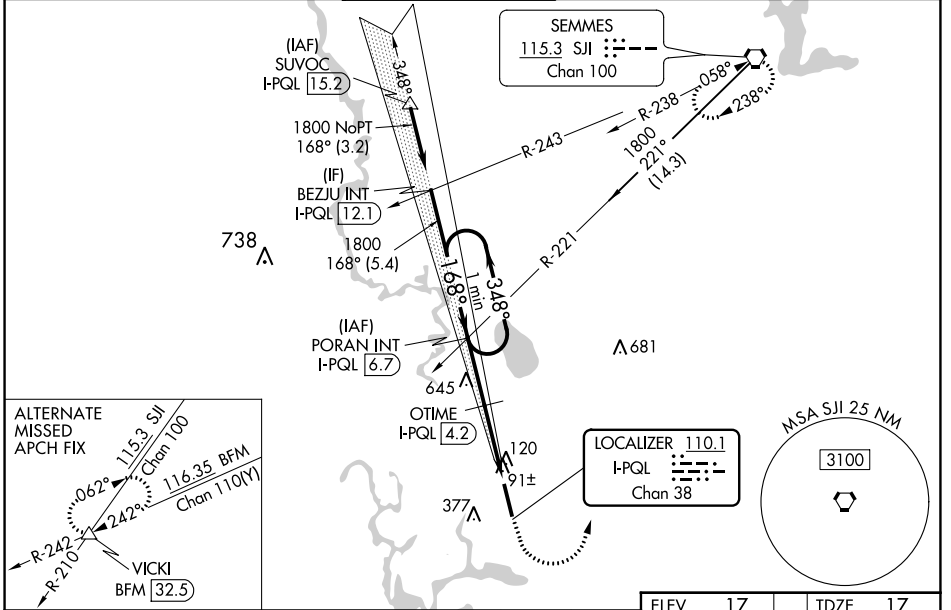
# ILS or LOC RWY 17

TRENT LOTT INTL (PQL)

**⚠** When local altimeter setting not received, use Mobile Rgnl altimeter setting and increase DA to 292 feet; increase all MDA 80 feet and S-LOC 17 visibility Cat B ¼ SM, increase Circling visibility Cats B and C ¼ SM. OTIME Fix Minimums, increase S-LOC 17 visibility Cats C and D ½ SM and Circling Cats C and D ½ SM. For inop ALS when using Mobile Rgnl altimeter setting increase S-ILS all Cats visibility to ¾ SM.

**MALSR**  MISSED APPROACH: Climb to 900 then climbing left turn to 2000 direct SJI VORTAC and hold.

ATIS <b>135.175</b>	MOBILE APP CON ★ <b>121.0 307.1</b>	TRENT LOTT TOWER ★ <b>118.575 (CTAF) 0</b>	GND CON <b>121.725</b>	CLNC DEL <b>121.725</b>	UNICOM <b>122.8</b>
------------------------	--	---	---------------------------	----------------------------	------------------------



CATEGORY	A	B	C	D
S-ILS 17	217-½ 200 (200-½)			
S-LOC 17	900-¾ 883 (900-¾)	900-2 883 (900-2)		
<b>C</b> CIRCLING	900-1¼ 883 (900-1¼)	900-2¾ 883 (900-2¾)		
OTIME FIX MINIMUMS				
S-LOC 17	360-½ 343 (400-½)	360-¾ 343 (400-¾)		
<b>C</b> CIRCLING	480-1 463 (500-1)	680-1 663 (700-1)	680-1¾ 663 (700-¾)	680-2 663 (700-2)

SC-4, 11 JUL 2024 to 08 AUG 2024

SC-4, 11 JUL 2024 to 08 AUG 2024