

APP CRS <b>263°</b>	Rwy Idg <b>3779</b>
	TDZE <b>632</b>
	Apt Elev <b>634</b>

# RNAV (GPS) RWY 26

GRIFFITH-MERRILLVILLE (Ø5C)

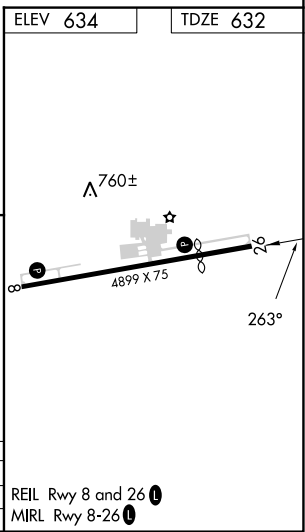
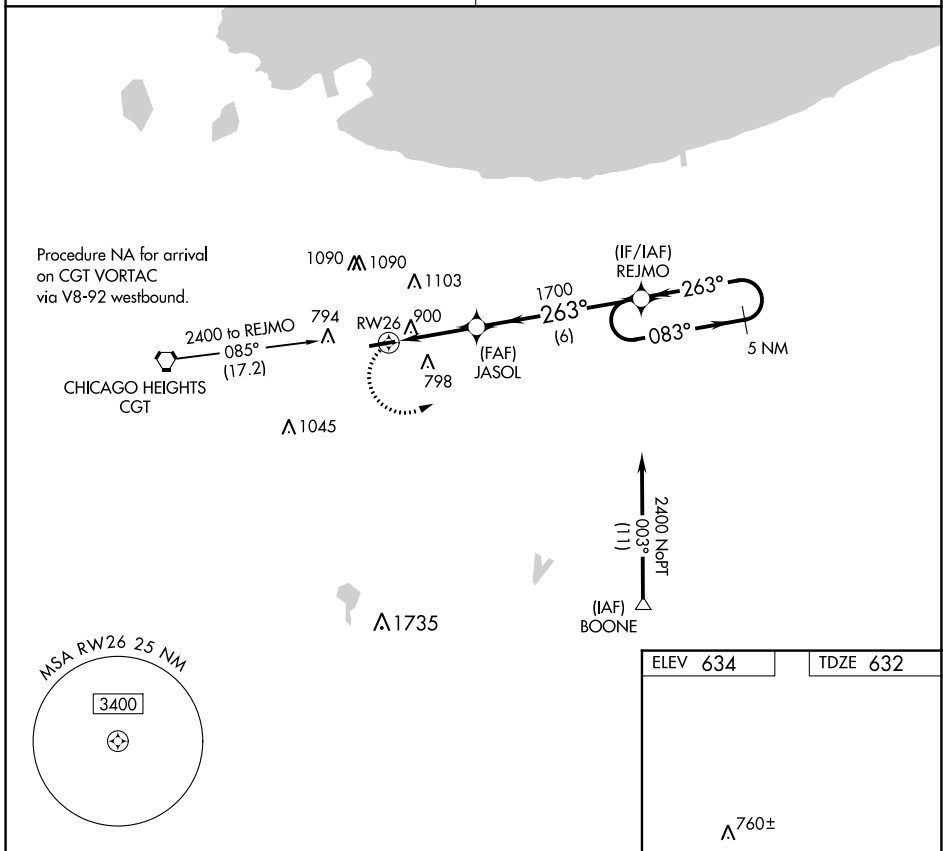
RNP APCH

Obtain local altimeter setting on CTAF; when not received use Chicago Midway Intl altimeter setting and increase all MDAs 60 feet. Visibility reduction by helicopters NA. Procedure NA at night.

MISSED APPROACH: Climbing left turn to 2400 direct REJMO and hold.

CHICAGO APP CON  
**133.1 285.6**

UNICOM  
**123.0 (CTAF)**



2400	REJMO	VGSI and descent angles not coincident (VGSI Angle 4.00/TCH 33).	5 NM Holding Pattern
CATEGORY	A	B	C D
LNAV MDA	1160-1	528 (600-1)	NA
CIRCLING	1200-1	566 (600-1)	NA

EC-2, 11 JUL 2024 to 08 AUG 2024

EC-2, 11 JUL 2024 to 08 AUG 2024