

GRIFFITH, INDIANA

AL-5431 (FAA)

24137

VORTAC CGT <b>114.2</b> Chan <b>89</b>	APP CRS <b>084°</b>	Rwy Idg TDZE <b>634</b> Apt Elev <b>634</b>	<b>4899</b>
--	------------------------	---	-------------

# VOR RWY 8

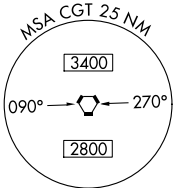
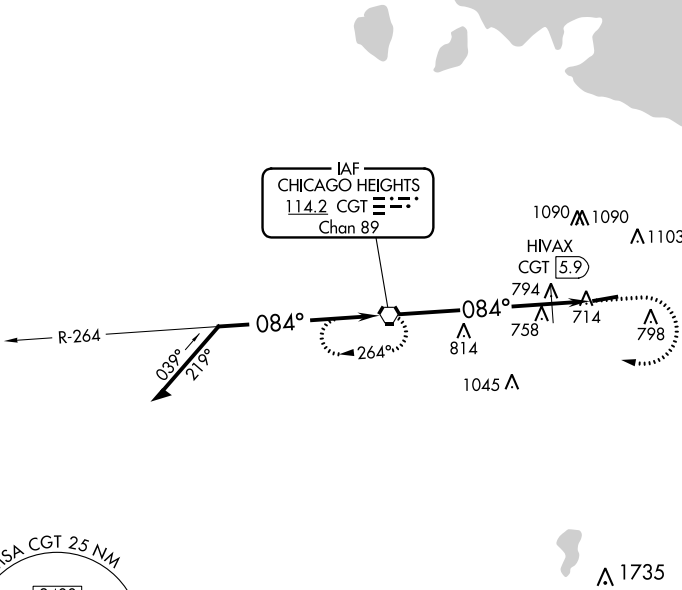
GRIFFITH-MERRILLVILLE (Ø5C)

**⚠ NA** Obtain local altimeter setting on CTAF; when not received, use Chicago Midway Intl altimeter setting and increase all MDAs 60 feet. Visibility reduction by helicopters NA. Procedure NA at night.

MISSED APPROACH: Climb to 1100 then climbing right turn to 2300 direct CGT VORTAC and hold.

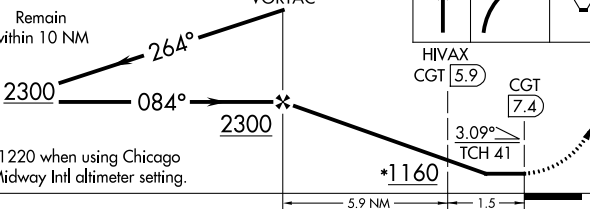
CHICAGO APP CON  
**133.1 285.6**

UNICOM  
**123.0 (CTAF) 0**



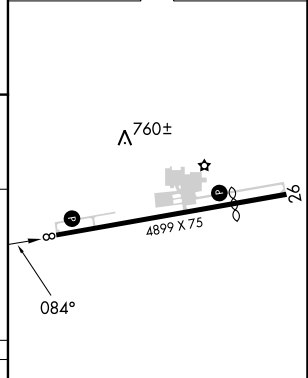
VGSI and descent angles not coincident (VGSI Angle 3.50/TCH 44).

Remain within 10 NM



\*1220 when using Chicago Midway Intl altimeter setting.

ELEV 634 TDZE 634



CATEGORY	A	B	C	D
S-8	1160-1	526 (600-1)		NA
CIRCLING	1200-1	566 (600-1)		NA
HIVAX FIX MINIMUMS				
S-8	1060-1	426 (500-1)		NA
CIRCLING	1200-1	566 (600-1)		NA

REIL Rwy 8 and 26	0
MIRL Rwy 8-26	0
FAF to MAP 7.4 NM	
Knots	60 90 120 150 180
Min:Sec	7:24 4:56 3:42 2:58 2:28

GRIFFITH, INDIANA  
Amdt 8B 24MAY18

41°31'N-87°24'W

# GRIFFITH-MERRILLVILLE (Ø5C) VOR RWY 8

EC-2, 11 JUL 2024 to 08 AUG 2024

EC-2, 11 JUL 2024 to 08 AUG 2024