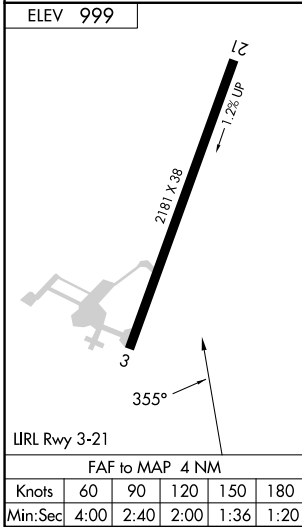
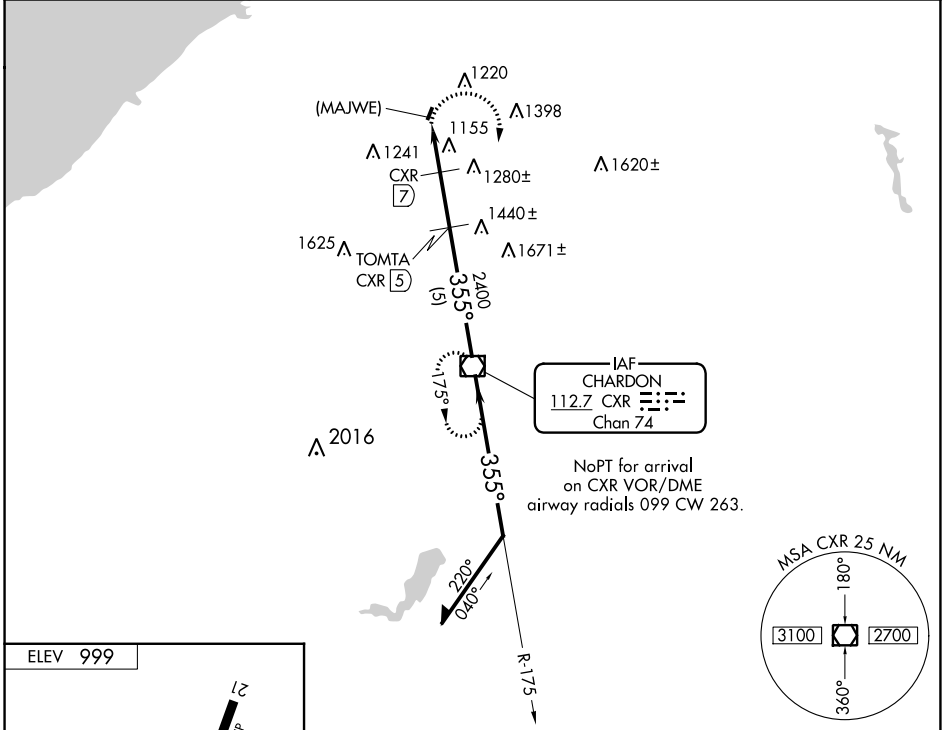


VOR/DME CXR 112.7 Chan 74	APP CRS 355°	Rwy Idg TDZE Apt Elev 999	N/A N/A 999
---	------------------------	---	--

VOR or GPS-A
CONCORD AIRPARK (2G1)

DME required for VOR approach.	MISSED APPROACH: Climbing right turn to 3000 direct CXR VOR/DME and hold.
<p>Procedure not authorized at night. Use Cleveland-Hopkins altimeter setting.</p>	
CLEVELAND APP CON 125.35 346.325	UNICOM 122.8 (CTAF)



<p>3000 CXR</p>	<p>CXR VOR/DME</p> <p>Remain within 10 NM</p>			
	<p>(MAJWE) CXR 9</p>	<p>CXR 7</p>	<p>TOMTA CXR 5</p>	<p>3100</p>
<p>2 NM</p>		<p>2 NM</p>		<p>5 NM</p>
CATEGORY	A	B	C	D
CIRCLING	1740-1 741 (800-1)	1740-1¼ 741 (800-1¼)	1740-2¼ 741 (800-2¼)	NA
DME MINIMUMS				
CIRCLING	1700-1 701 (800-1)		1700-2 701 (800-2)	NA

EC-2, 11 JUL 2024 to 08 AUG 2024

EC-2, 11 JUL 2024 to 08 AUG 2024