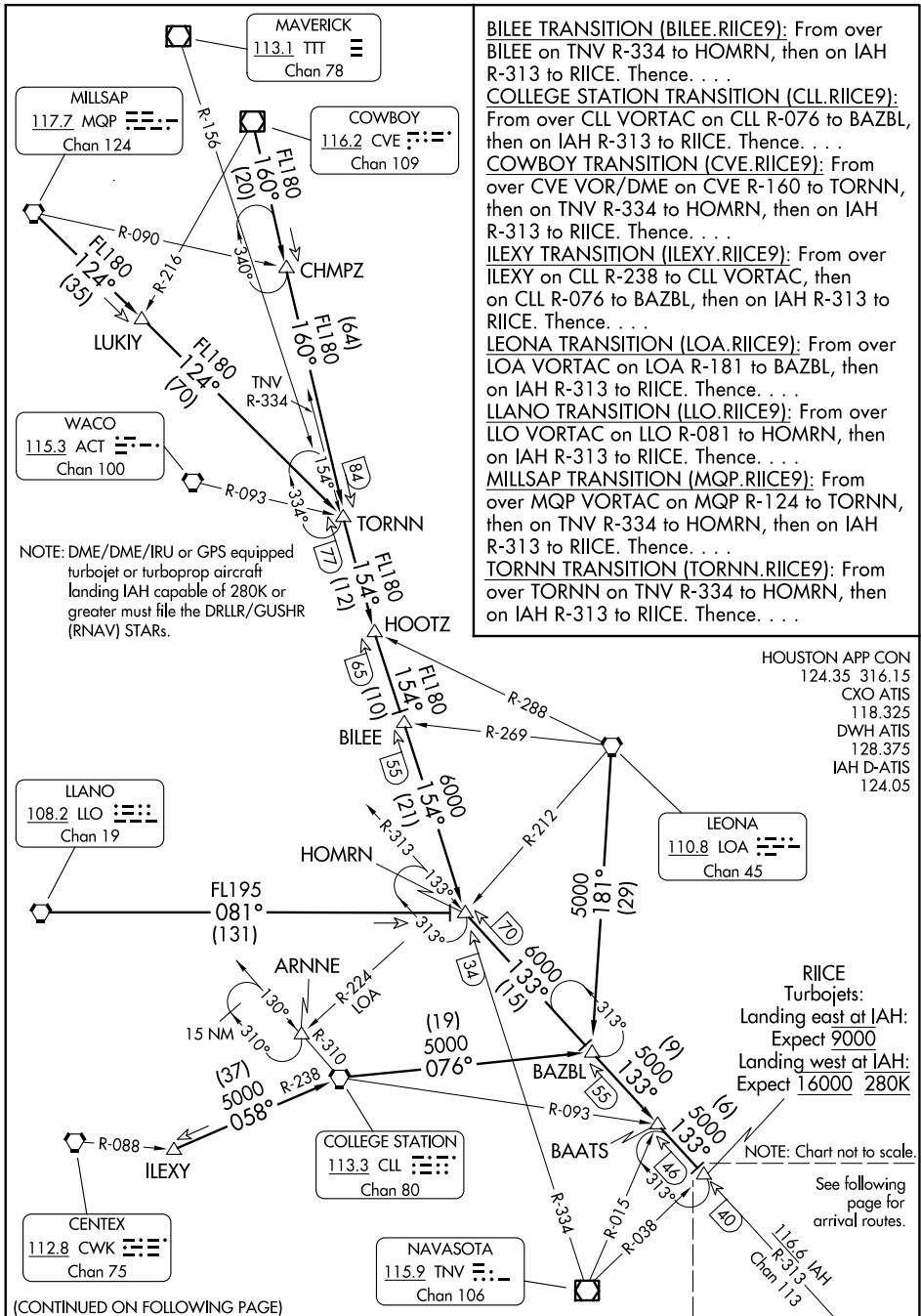


# RIICE NINE ARRIVAL

## Transition Routes

HOUSTON, TEXAS



**BILEE TRANSITION (BILEE.RIICE9):** From over BILEE on TNV R-334 to HOMRN, then on IAH R-313 to RIICE. Thence. . .

**COLLEGE STATION (CLL.RIICE9):** From over CLL VORTAC on CLL R-076 to BAZBL, then on IAH R-313 to RIICE. Thence. . .

**COWBOY TRANSITION (CVE.RIICE9):** From over CVE VOR/DME on CVE R-160 to TORNN, then on TNV R-334 to HOMRN, then on IAH R-313 to RIICE. Thence. . .

**ILEXY TRANSITION (ILEXY.RIICE9):** From over ILEXY on CLL R-238 to CLL VORTAC, then on CLL R-076 to BAZBL, then on IAH R-313 to RIICE. Thence. . .

**LEONA TRANSITION (LOA.RIICE9):** From over LOA VORTAC on LOA R-181 to BAZBL, then on IAH R-313 to RIICE. Thence. . .

**LLANO TRANSITION (LLO.RIICE9):** From over LLO VORTAC on LLO R-081 to HOMRN, then on IAH R-313 to RIICE. Thence. . .

**MILLSAP TRANSITION (MQP.RIICE9):** From over MQP VORTAC on MQP R-124 to TORNN, then on TNV R-334 to HOMRN, then on IAH R-313 to RIICE. Thence. . .

**TORNN TRANSITION (TORNN.RIICE9):** From over TORNN on TNV R-334 to HOMRN, then on IAH R-313 to RIICE. Thence. . .

NOTE: DME/DME/IRU or GPS equipped turbojet or turboprop aircraft landing IAH capable of 280K or greater must file the DRLLR/GUSHR (RNAV) STARs.

HOUSTON APP CON  
124.35 316.15  
CXO ATIS  
118.325  
DWH ATIS  
128.375  
IAH D-ATIS  
124.05

SC-5, 11 JUL 2024 to 08 AUG 2024

SC-5, 11 JUL 2024 to 08 AUG 2024

# RIICE NINE ARRIVAL

## Transition Routes

HOUSTON, TEXAS

(CONTINUED ON FOLLOWING PAGE)