

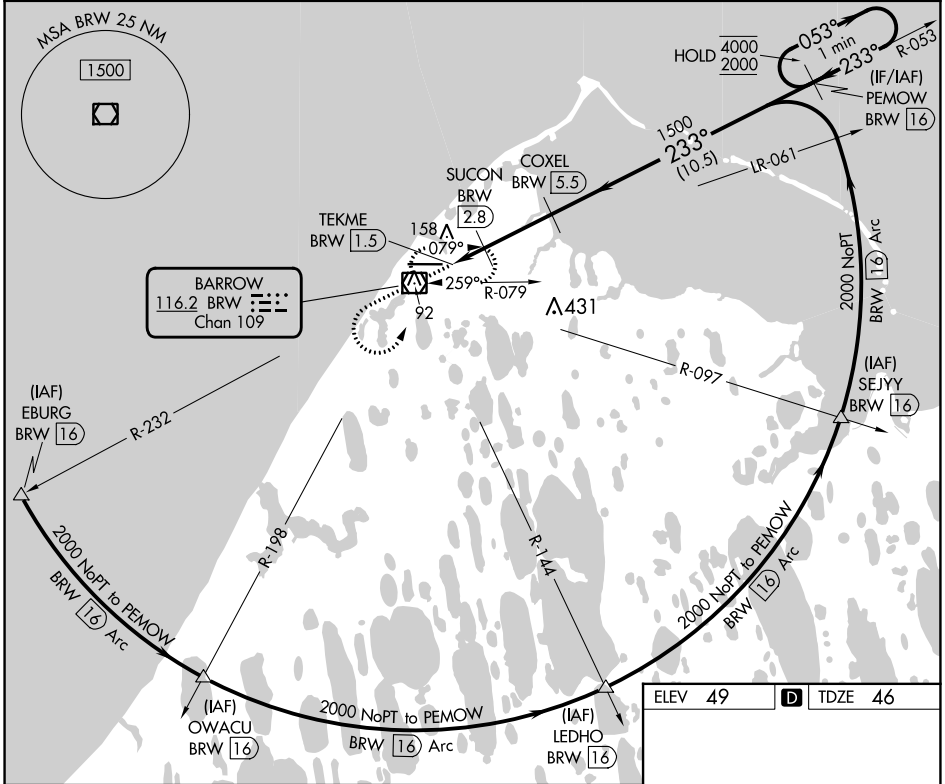
VOR/DME BRW <b>116.2</b> Chan <b>109</b>	APP CRS <b>233°</b>	Rwy Idg TDZE Apt Elev <b>5900</b> <b>46</b> <b>49</b>
--	------------------------	--

# VOR RWY 26

WILEY POST-WILL ROGERS MEML (BRW)(PABR)

DME required.	MISSED APPROACH: Climb to 1600 then climbing left turn to 2000 direct BRW VOR/DME and hold, continue climb-in-hold to 2000.
<p>⚠</p> <p>⚠ Circling NA for Cat A north of Rwy 8-26.</p>	

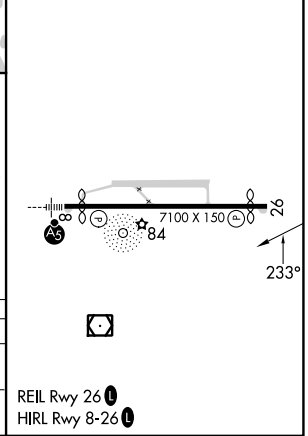
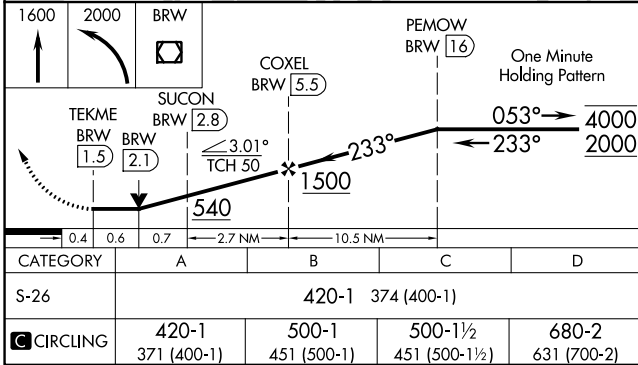
AFIS <b>132.15</b>	ANCHORAGE CENTER <b>135.3 239.25</b>	BARROW RADIO <b>123.6 (CTAF) 0</b>
-----------------------	---	---------------------------------------



AK, 11 JUL 2024 to 05 SEP 2024

AK, 11 JUL 2024 to 05 SEP 2024

ELEV 49	<b>D</b> TDZE 46
---------	------------------



UTQIAGVIK, ALASKA Amdt 2A 02DEC21	WILEY POST-WILL ROGERS MEML (BRW)(PABR) 71°17'N-156°46'W	VOR RWY 26
--------------------------------------	---	------------

REIL Rwy 26 **0**  
HIRL Rwy 8-26 **0**