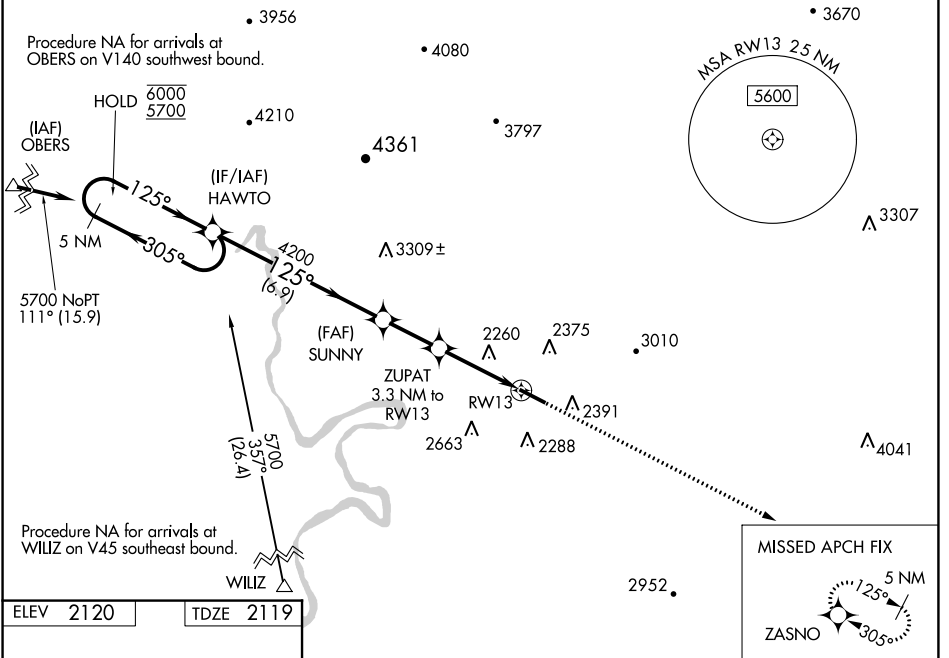


WAAS CH <b>86712</b> <b>W13A</b>	APP CRS <b>125°</b>	Rwy Idg TDZE Apt Elev	<b>5501</b> <b>2119</b> <b>2120</b>
--	------------------------	-----------------------------	---

# RNAV (GPS) RWY 13

VIRGINIA TECH/MONTGOMERY EXEC (BCB)

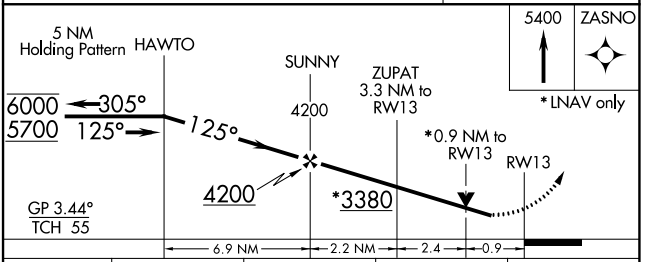
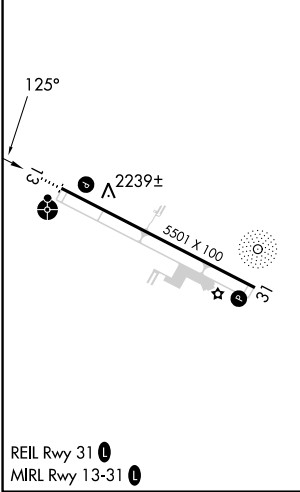
RNP APCH.		ODALS	MISSED APPROACH: Climb to 5400 direct ZASNO and hold, continue climb-in-hold to 5400.
<p><b>⚠</b> Rwy 13 helicopter visibility reduction below 1 SM NA. For uncompensated Baro-VNAV systems, LNAV/VNAV NA below -19°C or above 54°C. Inop table does not apply to LPV all Cats, LNAV/VNAV all Cats, and LNAV Cats A and B.</p>			
AWOS-3 <b>133.325</b>	ROANOKE APP CON <b>126.9 339.8</b>	CLNC DEL <b>124.85</b>	UNICOM <b>123.05 (CTAF) 0</b>



NE-3, 11 JUL 2024 to 08 AUG 2024

NE-3, 11 JUL 2024 to 08 AUG 2024

ELEV 2120	TDZE 2119
-----------	-----------



CATEGORY	A	B	C	D
LPV DA		2389-1	270 (300-1)	NA
LNAV/VNAV DA		2419-1	300 (300-1)	NA
LNAV MDA		2520-1	401 (400-1)	NA
<b>C</b> CIRCLING	2760-1 640 (700-1)	2820-1 700 (700-1)	2980-2½ 860 (900-2½)	NA