

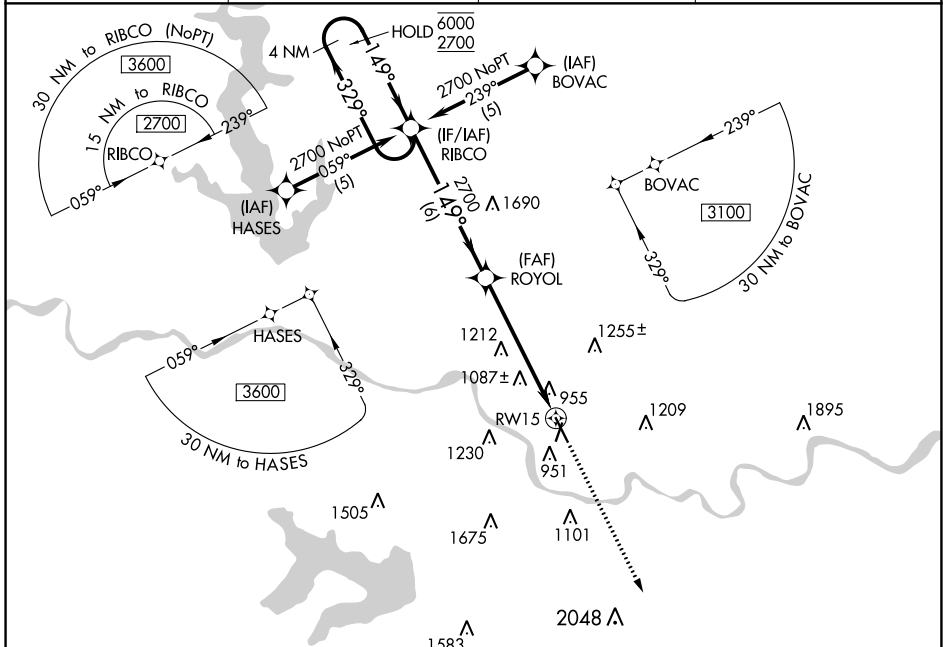
APP CRS 149°	Rwy Idg 5700 TDZE 831 Apt Elev 833
------------------------	---

RNAV (GPS) RWY 15

LAWRENCE RGNL (LWC)

RNP APCH.	MISSED APPROACH: Climb to 3100 direct GOLEY and hold.
Rwy 15 Helicopter visibility reduction below 3/4 SM NA.	

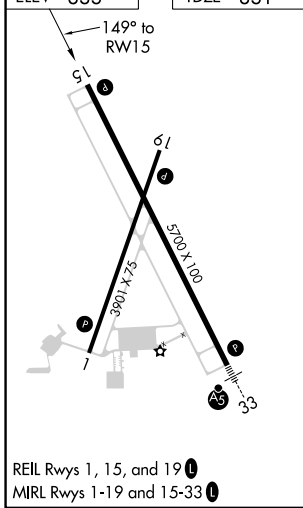
ASOS 121.225	KANSAS CITY CENTER 123.8 343.7	CLNC DEL 121.825	UNICOM 123.0 (CTAF) 0
------------------------	--	----------------------------	---------------------------------



NC-2, 11 JUL 2024 to 08 AUG 2024

NC-2, 11 JUL 2024 to 08 AUG 2024

ELEV 833	TDZE 831
-----------------	-----------------



REIL Rws 1, 15, and 19
MIRL Rws 1-19 and 15-33

