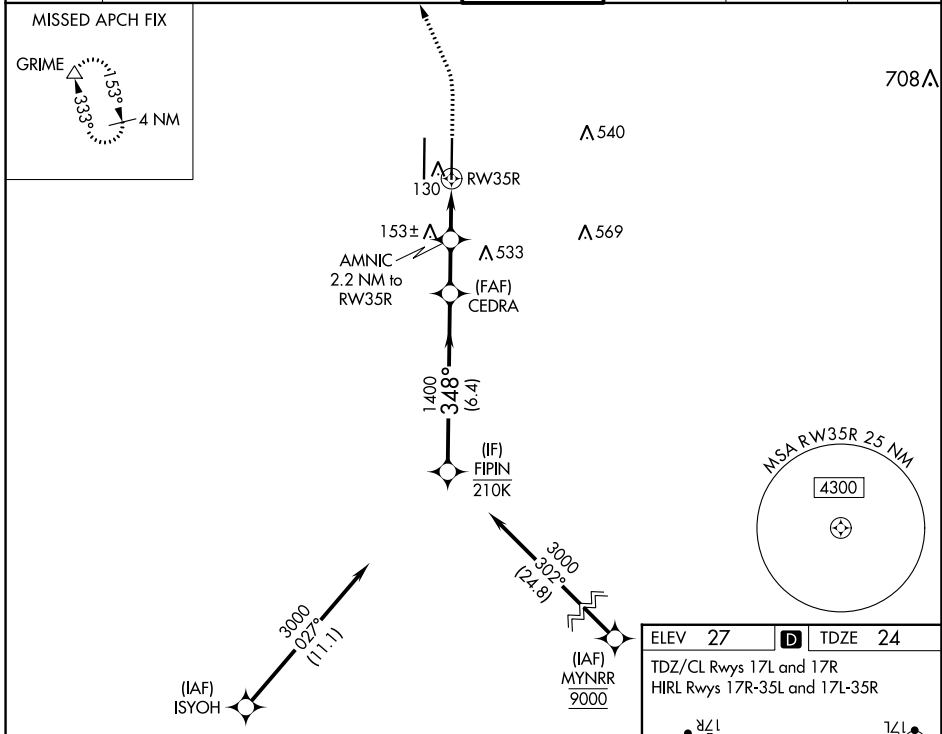


APP CRS	Rwy Idg	8605
348°	TDZE	24
	Apt Elev	27

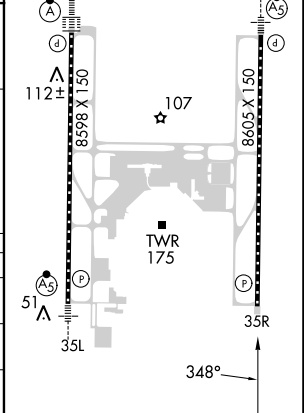
RNAV (GPS) Y RWY 35R

SACRAMENTO INTL (SMF)

RNP APCH-GPS.		MISSED APPROACH: Climb to 800 then climbing left turn to 2000 direct GRIME and hold.	
<p>▼ Circling NA west of Rwy 17L-35R. Rwy 35R helicopter visibility reduction below 3/4 SM NA. For uncompensated Baro-VNAV systems, LNAV/VNAV NA below -2°C or above 54°C.</p>			
D-ATIS	NORCAL APP CON	CAPITOL TOWER	GND CON
126.75	125.4 259.1 (W-NE) 125.25 257.9 (SW) 127.4 317.5 (E-SE)	125.7 256.7	121.7 256.7
		CLNC DEL	CPDLC
		121.1 256.7	



	FIPIN	CEDRA	AMNIC 2.2 NM to RW35R	RW35R
	3000	1400	1400	780
	GP 3.00° TCH 64		0.9 NM to RW35R	
	6.4 NM	1.9 NM	1.3 NM	0.9 NM
CATEGORY	A	B	C	D
LNAV/VNAV DA		311/45	287 (300-7%)	
LNAV MDA		380/55	356 (400-1)	
C CIRCLING	400-1 373 (400-1)	480-1 453 (500-1)	480-1½ 453 (500-1½)	840-2¾ 813 (900-2¾)



SW-2, 11 JUL 2024 to 08 AUG 2024

SW-2, 11 JUL 2024 to 08 AUG 2024