

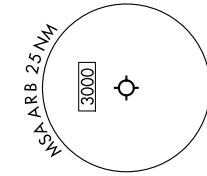
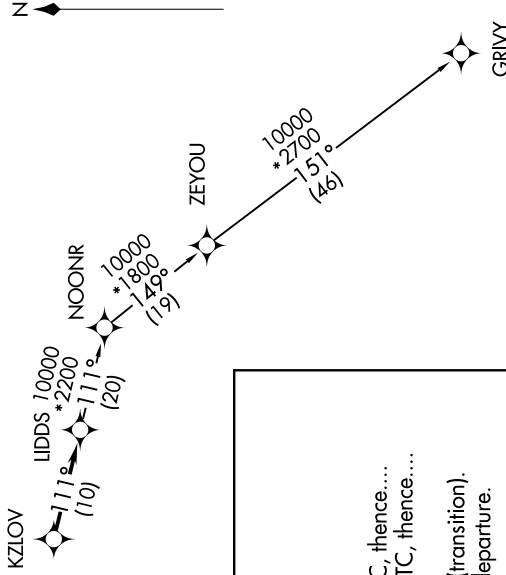
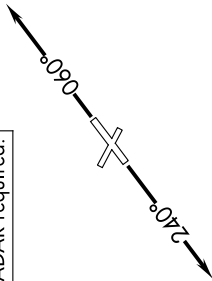
EC-1, 11 JUL 2024 to 08 AUG 2024

ATIS 134.55
 CLNC DEL 121.6
 GND CON 121.6
 ANN ARBOR TOWER * 121.6
 120.3 (CTAF)
 DETROIT DEP CON 118.95 284.0

TAKEOFF MINIMUMS:
 Rwys 12, 30: NA - Environmental.
 Rwys 6, 24: Standard.

RNAV 1 - DME/DME/IRU or GPS.
 RADAR required.

**TOP ALTITUDE:
 ASSIGNED BY ATC**



NOTE: Turbopjet departures at/above 10000, maintain 280K until advised by ATC.

DEPARTURE ROUTE DESCRIPTION

TAKEOFF RUNWAY 6: Climb on heading 060° or as assigned by ATC, thence....
TAKEOFF RUNWAY 24: Climb on heading 240° or as assigned by ATC, thence....
for RADAR vectors to KZLOV, then on track 111° to LIDDS, then on (transition).
 Maintain ATC assigned altitude, expect filed altitude 10 minutes after departure.

GRIVY TRANSITION (LIDDS3.GRIVY):

NOTE: Chart not to scale.

EC-1, 11 JUL 2024 to 08 AUG 2024