

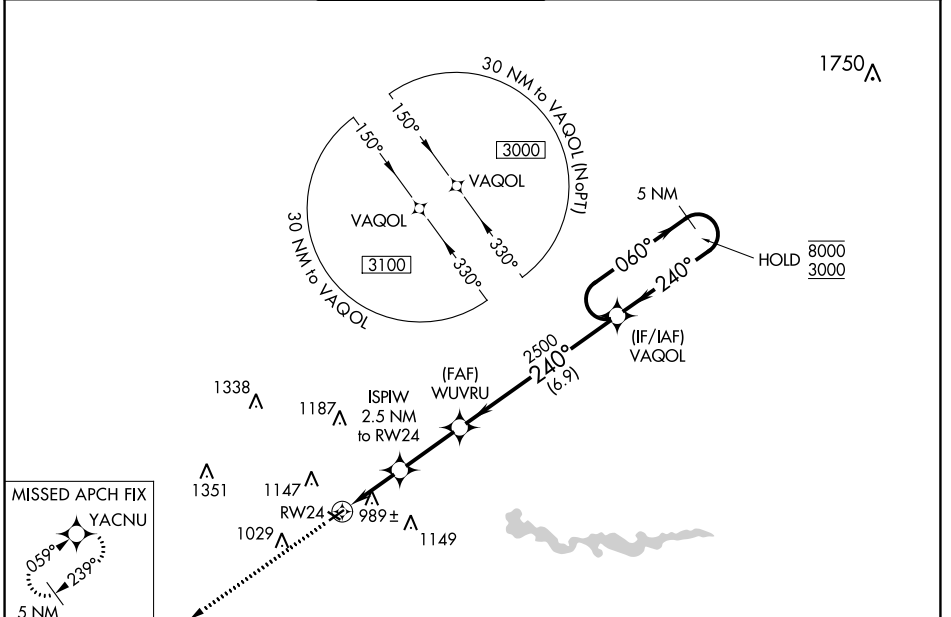
WAAS CH <b>61120</b> <b>W24A</b>	APP CRS <b>240°</b>	Rwy Idg TDZE Apf Elev	<b>3505</b> <b>831</b> <b>839</b>
--	------------------------	-----------------------------	---

# RNAV (GPS) RWY 24

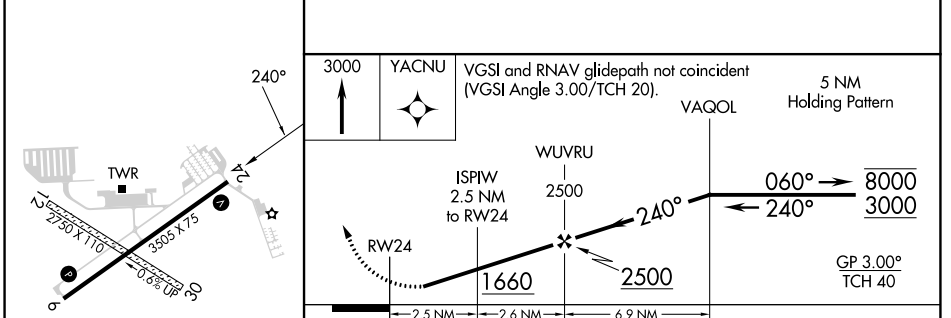
ANN ARBOR MUNI (A.R.B)

RNP APCH - GPS.		ANN ARBOR TOWER * <b>120.3</b> (CTAF) <b>0</b>		GND CON <b>121.6</b>	CLNC DEL <b>121.6</b>	UNICOM <b>123.0</b>
<p>⚠ Circling NA to Rwy 12 and 30. Rwy 24 helicopter visibility reduction below <math>\frac{3}{4}</math> SM NA. For uncompensated Baro-VNAV systems, LNAV/VNAV NA below -16°C or above 38°C.</p>				<p>MISSED APPROACH: Climb to 3000 direct YACNU and hold.</p>		

ATIS <b>134.55</b>	DETROIT APP CON <b>118.95 284.0</b>	ANN ARBOR TOWER * <b>120.3</b> (CTAF) <b>0</b>	GND CON <b>121.6</b>	CLNC DEL <b>121.6</b>	UNICOM <b>123.0</b>
-----------------------	--	---	-------------------------	--------------------------	------------------------



ELEV <b>839</b>	TDZE <b>831</b>
-----------------	-----------------



CATEGORY	A	B	C	D
LPV DA	1132-1 301 (300-1)			
LNAV/VNAV DA	1170-1 339 (400-1)			
LNAV MDA	1300-1 469 (500-1)		1300-1 $\frac{3}{8}$ 469 (500-1 $\frac{3}{8}$ )	

EC-1, 11 JUL 2024 to 08 AUG 2024

EC-1, 11 JUL 2024 to 08 AUG 2024