

|  |                        |  |
|--|------------------------|--|
| WAAS<br>CH <b>50109</b><br><b>W17A</b> | APP CRS<br><b>174°</b> | Rwy Idg<br>TDZE <b>6705</b><br><b>1530</b><br>Apt Elev <b>1533</b> |
|--|------------------------|--|

# RNAV (GPS) RWY 17

NEWTON-CITY-COUNTY (E WK)

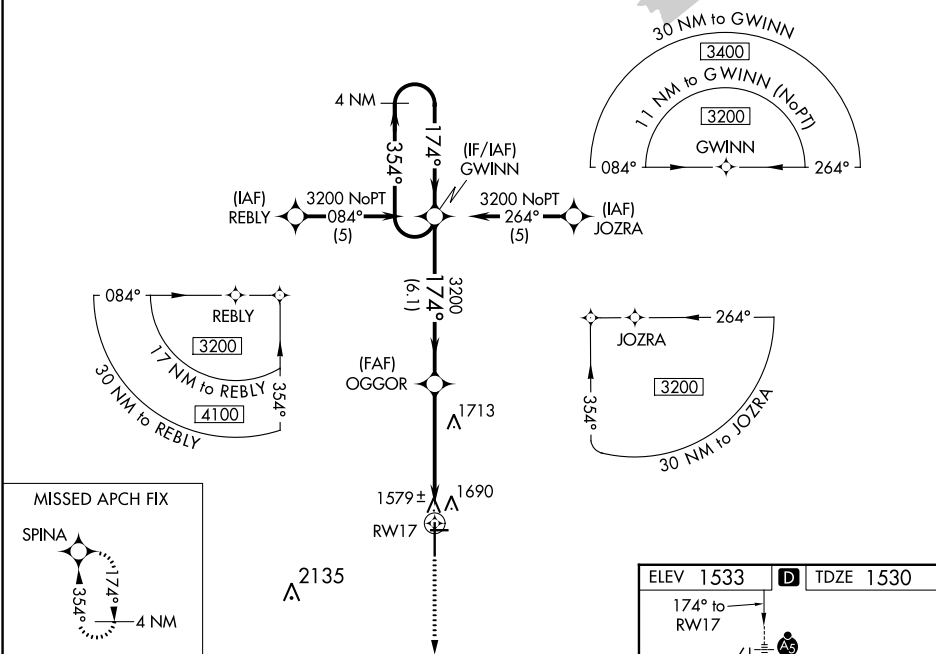
RNP APCH.

**▼** When local altimeter setting not received, use Wichita Dwight D Eisenhower Ntl altimeter setting: increase LPV DA to 1891 feet and visibility 1/2 SM; increase all MDAs 100 feet and visibility Cat C and LNAV Cat D 1/4 SM. **VDP NA** when using Wichita Dwight D Eisenhower Ntl altimeter setting. For inop ALS, increase LPV visibility to 2/5 SM and LNAV Cat C/D to 1 3/5 SM. For inop ALS when using Wichita Dwight D Eisenhower Ntl altimeter setting, increase LPV visibility to 1 SM. Circling Rwy 8, 26 NA at night.



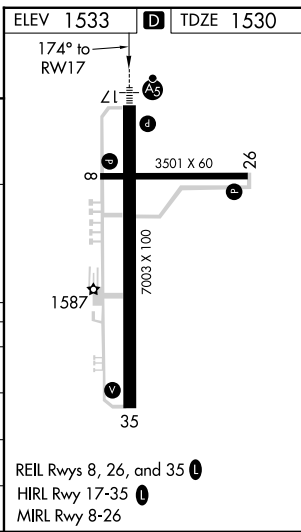
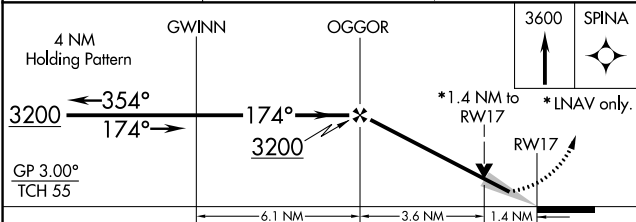
**MISSED APPROACH:**  
Climb to 3600 direct SPINA and hold.

|                            |                                       |                           |                                 |
|----------------------------|---------------------------------------|---------------------------|---------------------------------|
| AWOS-3PT<br><b>123.875</b> | WICHITA APP CON<br><b>125.5 306.2</b> | CLNC DEL<br><b>126.55</b> | UNICOM<br><b>123.0 (CTAF) 0</b> |
|----------------------------|---------------------------------------|---------------------------|---------------------------------|



NC-2, 11 JUL 2024 to 08 AUG 2024

NC-2, 11 JUL 2024 to 08 AUG 2024



| CATEGORY     | A                      | B                          | C                  | D |
|--------------|------------------------|----------------------------|--------------------|---|
| LPV DA       | 1791-1/2 261 (300-1/2) |                            |                    |   |
| LNAV/VNAV DA | NA                     |                            |                    |   |
| LNAV MDA     | 2020-1/2 490 (500-1/2) | 2020-1 490 (500-1)         |                    |   |
| CIRCLING     | 2020-1 487 (500-1)     | 2020-1 1/2 487 (500-1 1/2) | 2100-2 567 (600-2) |   |

REIL Rwy 8, 26, and 35 0  
HIRL Rwy 17-35 0  
MIRL Rwy 8-26