

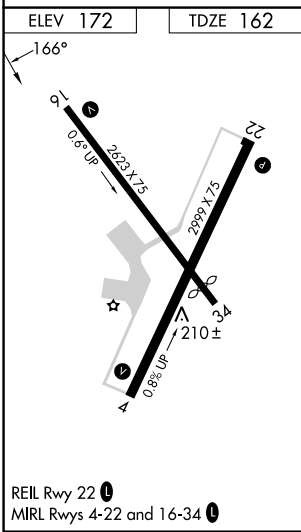
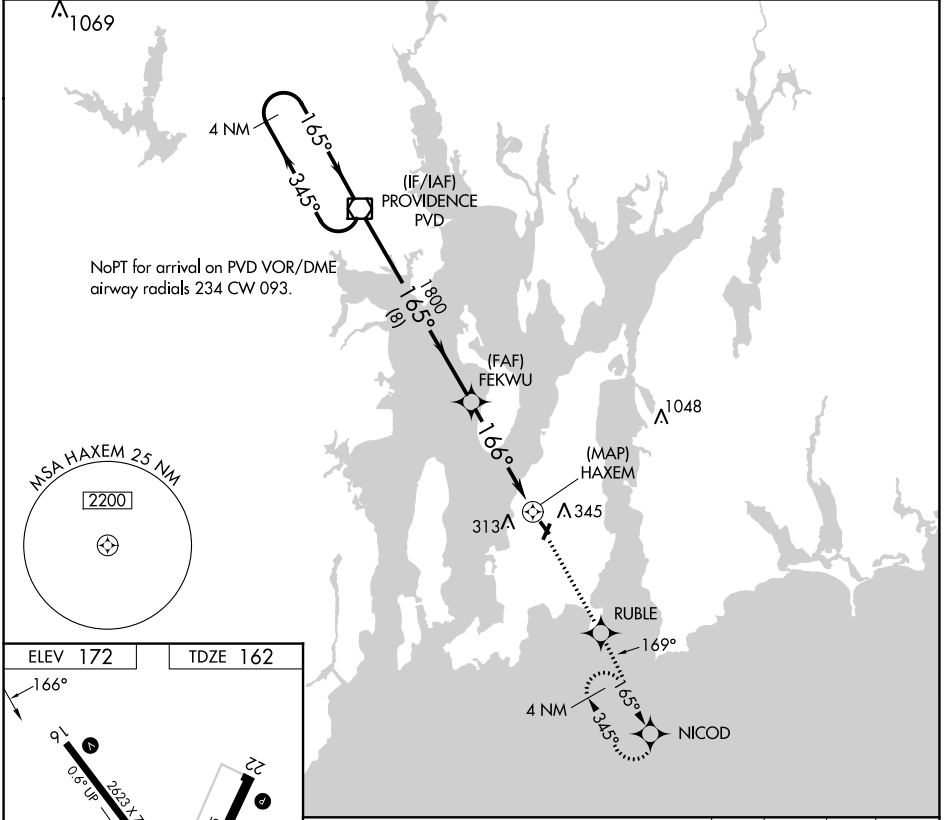
APP CRS <b>166°</b>	Rwy Idg <b>2623</b>
	TDZE <b>162</b>
	Apt Elev <b>172</b>

# RNAV (GPS) RWY 16

NEWPORT STATE (UUU)

RNP APCH	When local altimeter setting not received, use Providence altimeter setting and increase all MDAs 60 feet. Circling Rwy 4, 22, 34 NA at night. Rwy 16 helicopter visibility reduction below $\frac{3}{4}$ SM NA.	MISSED APPROACH: Climb to 2100 direct RUBLE and via 169° track to NICOD and hold.
----------	---	---

ASOS <b>132.075</b>	PROVIDENCE APP CON* <b>128.7 269.525</b>	CLNC DEL <b>127.25</b>	UNICOM <b>123.05 (CTAF)</b>
------------------------	---	---------------------------	--------------------------------



4 NM Holding Pattern	PVD VOR/DME	2100	RUBLE	tr 169°	NICOD
3000	← 345°	↑	◆	↑	◆
	165° →				
VGSi and descent angles not coincident (VGSi Angle 3.75/TCH 40).					
	165°				
	FEKWU	3.04° TCH 40			
	1800				
	166°				
	HAXEM				
	8 NM	4.5 NM	0.5		
CATEGORY	A	B	C	D	
LNAV MDA	600-1	438 (500-1)	600-1¼ 438 (500-1¼)	NA	
CIRCLING	700-1 528 (600-1)	760-1 588 (600-1)	780-1¾ 608 (700-1¾)	NA	

NE-1, 11 JUL 2024 to 08 AUG 2024

NE-1, 11 JUL 2024 to 08 AUG 2024