

APP CRS	Rwy ldg	<b>5425</b>
<b>138°</b>	TDZE	<b>20</b>
	Apt Elev	<b>20</b>

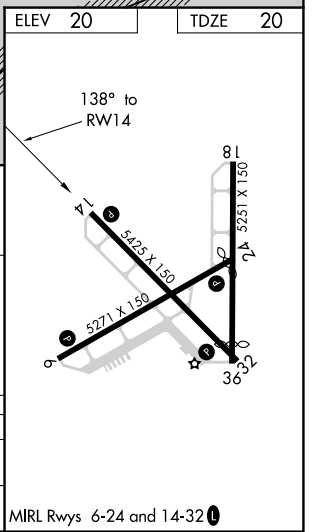
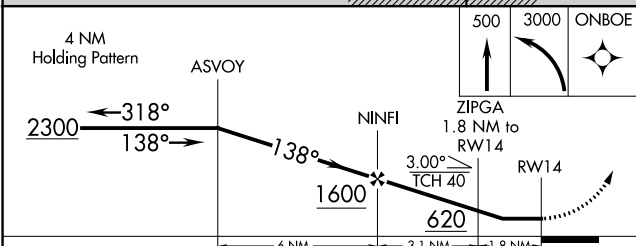
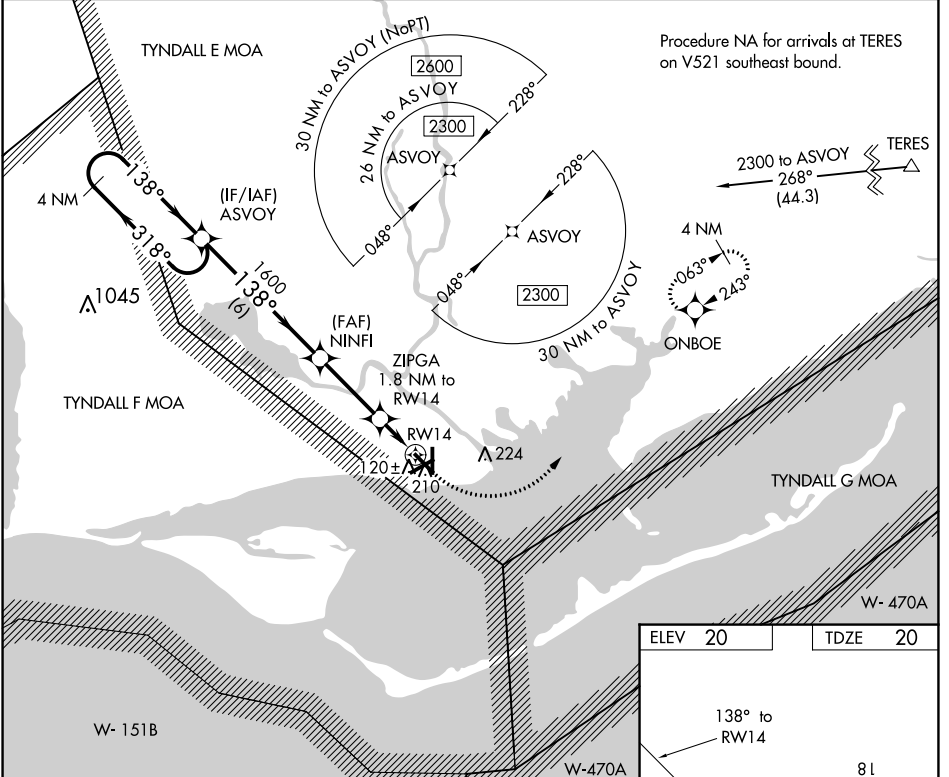
# RNAV (GPS) RWY 14

APALACHICOLA RGNL-CLEVE RANDOLPH FLD (AAF)

**⚠** DME/DME RNP-0.3 NA. Helicopter visibility reduction below 1 SM NA. When local altimeter setting not received, use Northwest Florida Beaches Intl altimeter setting and increase all MDAs 140 feet, increase LNAV Cats C/D visibility  $\frac{1}{2}$  SM and Circling Cats C/D visibility  $\frac{1}{2}$  SM. Straight-in Rwy 14 NA at night, Circling Rwy 6, 14, 18, 24, 32 NA at night.

**MISSED APPROACH:** Climb to 500 then climbing left turn to 3000 direct ONBOE and hold, continue climb-in-hold to 3000.

ASOS <b>119.925</b>	TYNDALL APP CON ★ <b>124.15</b>	UNICOM <b>122.8 (CTAF)</b> ①
------------------------	------------------------------------	---------------------------------



CATEGORY	A	B	C	D
LNAV MDA	400-1	380 (400-1)	400-1 $\frac{1}{8}$	380 (400-1 $\frac{1}{8}$ )
CIRCLING	520-1	500 (500-1)	680-1 $\frac{3}{4}$ 660 (700-1 $\frac{3}{4}$ )	680-2 660 (700-2)

MIRL Rwys 6-24 and 14-32 ①

# RNAV (GPS) RWY 14

SE-3, 11 JUL 2024 to 08 AUG 2024

SE-3, 11 JUL 2024 to 08 AUG 2024