

WAAS CH 69527 W01A	APP CRS 007°	Rwy Idg TDZE Apt Elev	4204 2694 2694
--	------------------------	-----------------------------	---

RNAV (GPS) RWY 1

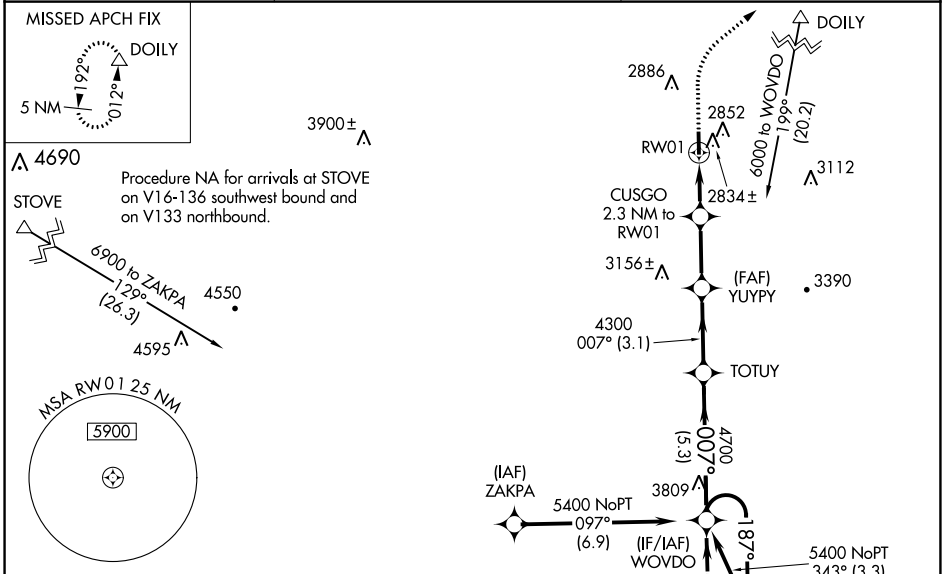
TWIN COUNTY (HLX)

RNP APCH - GPS.

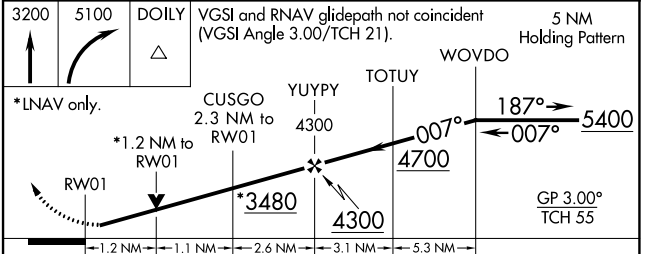
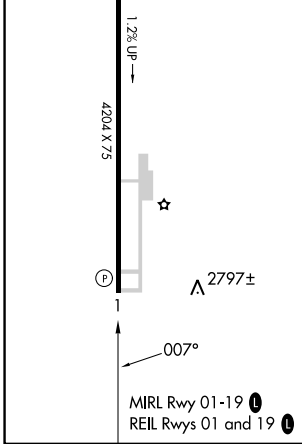
▼ Baro-VNAV NA when using Dublin altimeter setting. For uncompensated Baro-VNAV systems, LNAV/VNAV NA below -20°C or above 54°C. Rwy 1 helicopter visibility reduction below ¾ SM NA. VDP NA with Dublin altimeter setting. When local altimeter setting not received, use Dublin altimeter setting: increase LPV DA to 3103 feet and all visibilities ½ SM; increase LNAV/VNAV DA to 3154 feet and all visibilities ½ SM; increase all MDAs 140 feet and visibility LNAV Cats C and D ½ SM and Circling Cat C ¼ SM and Cat D ½ SM.

MISSED APPROACH: Climb to 3200 then climbing right turn to 5100 direct DOILY and hold, continue climb-in-hold to 5100.

AWOS-3 118.375	ROANOKE APP CON 126.0 339.8	UNICOM 122.8 (CTAF) 0
--------------------------	---------------------------------------	---------------------------------



ELEV 2694	TDZE 2694
-----------	-----------



CATEGORY	A	B	C	D
LPV DA		2965-1	271 (300-1)	
LNAV/VNAV DA		3016-1	322 (400-1)	
LNAV MDA	3100-1	406 (500-1)	3100-1½	406 (500-1½)
CIRCLING	3200-1	506 (600-1)	3200-1½ 506 (600-1½)	3440-2½ 746 (800-2½)

NE-3, 11 JUL 2024 to 08 AUG 2024

NE-3, 11 JUL 2024 to 08 AUG 2024