

WAAS CH 70427 W27A	APP CRS 274°	Rwy Idg TDZE Apt Elev	4003 1312 1312
--	------------------------	-----------------------------	---

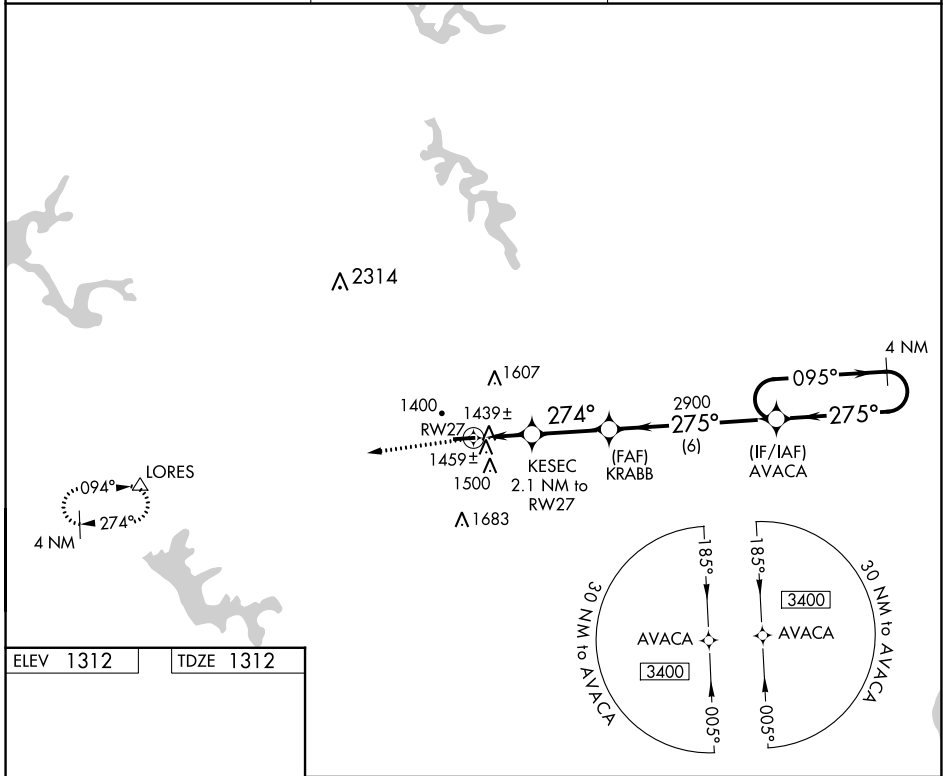
RNAV (GPS) RWY 27

BARNESVILLE-BRADFIELD (6G5)

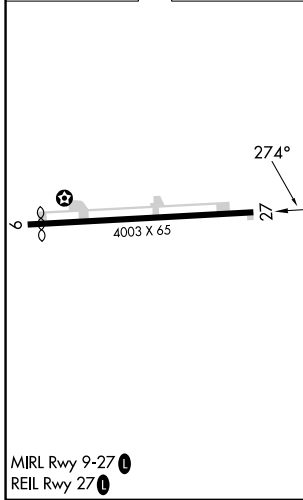
NA DME/DME RNP-0.3 NA. Procedure NA at night. Visibility reduction by helicopters NA. Use Wheeling, WV altimeter setting; When not received use Washington, PA altimeter setting and increase all MDA 40 feet.

MISSED APPROACH: Climbing left turn to 3000 direct LORES and hold.

HLG ASOS 127.375	CLEVELAND CENTER 126.95 239.30	UNICOM 123.0 (CTAF) 1
----------------------------	--	--



ELEV 1312	TDZE 1312
------------------	------------------



3000 LORES Δ		AVACA 4 NM Holding Pattern	
RWY 27		KESEEC $\le 3.00^\circ$ TCH 40 2.1 NM to RWY 27	KRABB
2020		2900	3400
-2.1 NM		2.8 NM	6 NM
CATEGORY	A	B	C D
LP MDA	1780-1	468 (500-1)	NA
LNAV MDA	1800-1	488 (500-1)	NA
CIRCLING	1880-1 568 (600-1)	1940-1 628 (700-1)	NA

MIRL Rwy 9-27 **1**
REIL Rwy 27 **1**

EC-2, 11 JUL 2024 to 08 AUG 2024

EC-2, 11 JUL 2024 to 08 AUG 2024