

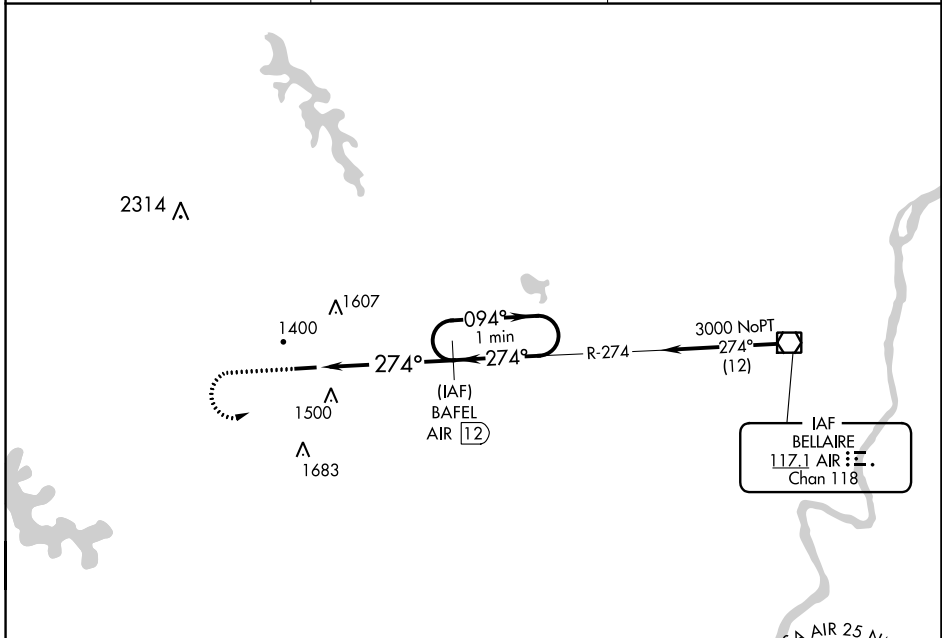
VOR/DME AIR <b>117.1</b> Chan <b>118</b>	APP CRS <b>274°</b>	Rwy Idg TDZE Apt Elev	<b>4003</b> <b>1312</b> <b>1312</b>
--	------------------------	-----------------------------	---

# VOR/DME RWY 27

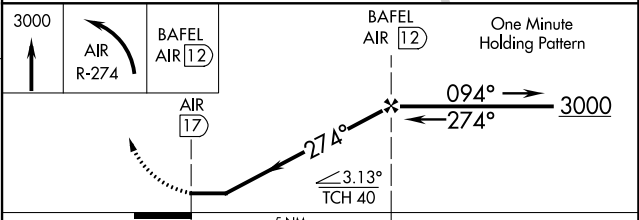
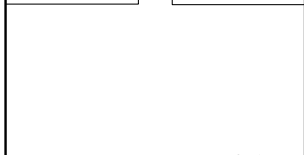
BARNESVILLE-BRADFIELD (6G5)

<b>NA</b> Use Wheeling, WV altimeter setting.	MISSED APPROACH: Climb to 3000, then left turn via R-274 to BAFEL/12 DME and hold.
---	--

HLG ASOS <b>127.375</b>	CLEVELAND CENTER <b>126.95 239.30</b>	UNICOM <b>123.0</b> (CTAF) <b>1</b>
----------------------------	--	--



ELEV 1312	TDZE 1312
-----------	-----------



CATEGORY	A	B	C	D
S-27	1880-1	568 (600-1)	NA	
CIRCLING	1940-1	628 (700-1)	NA	

MRL Rwy 9-27 **1**  
REIL Rwy 27 **1**

EC-2, 11 JUL 2024 to 08 AUG 2024

EC-2, 11 JUL 2024 to 08 AUG 2024