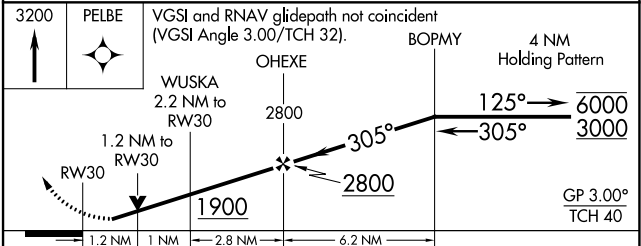
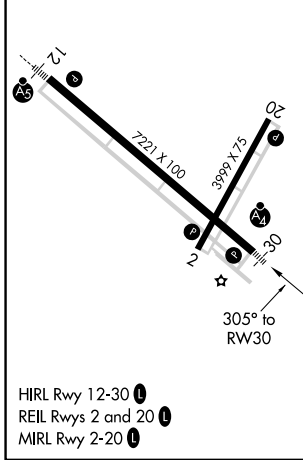
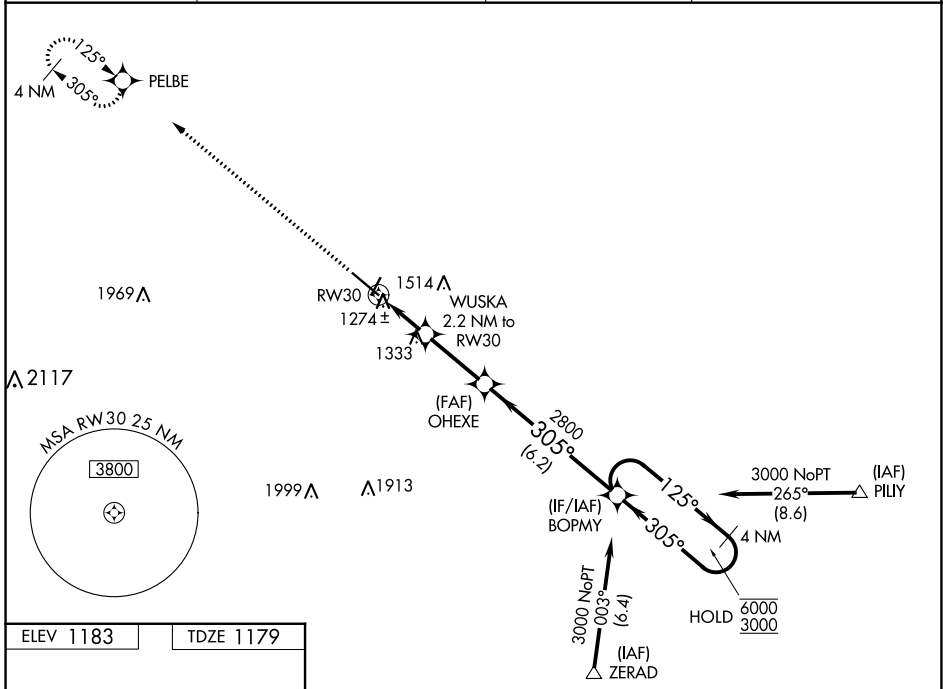


WAAS CH 86321 W30A	APP CRS 305°	Rwy Idg 7221 TDZE 1179 Apt Elev 1183
--	------------------------	---

RNAV (GPS) RWY 30

SOUTHWEST MINNESOTA RGNL MARSHALL/RYAN FLD (MML)

RNP APCH - GPS		MALSF	MISSED APPROACH: Climb to 3200 direct PELBE and hold.
AWOS-3PT 120.150	MINNEAPOLIS CENTER 127.1 290.2	GCO 121.725	UNICOM 122.8 (CTAF) 0



CATEGORY	A	B	C	D
LPV DA	1429- ³ / ₄		250 (300- ³ / ₄)	
LNAV/VNAV DA	1464- ³ / ₄		285 (300- ³ / ₄)	
LNAV MDA	1600- ³ / ₄	421 (500- ³ / ₄)	1600-1	421 (500-1)
C CIRCLING	1640-1	457 (500-1)	1820-1 ³ / ₄ 637 (700-1 ³ / ₄)	1840-2 657 (700-2)

RNAV (GPS) RWY 30

NC-1, 11 JUL 2024 to 08 AUG 2024

NC-1, 11 JUL 2024 to 08 AUG 2024