

BLUFFTON, OHIO

AL-5665 (FAA)

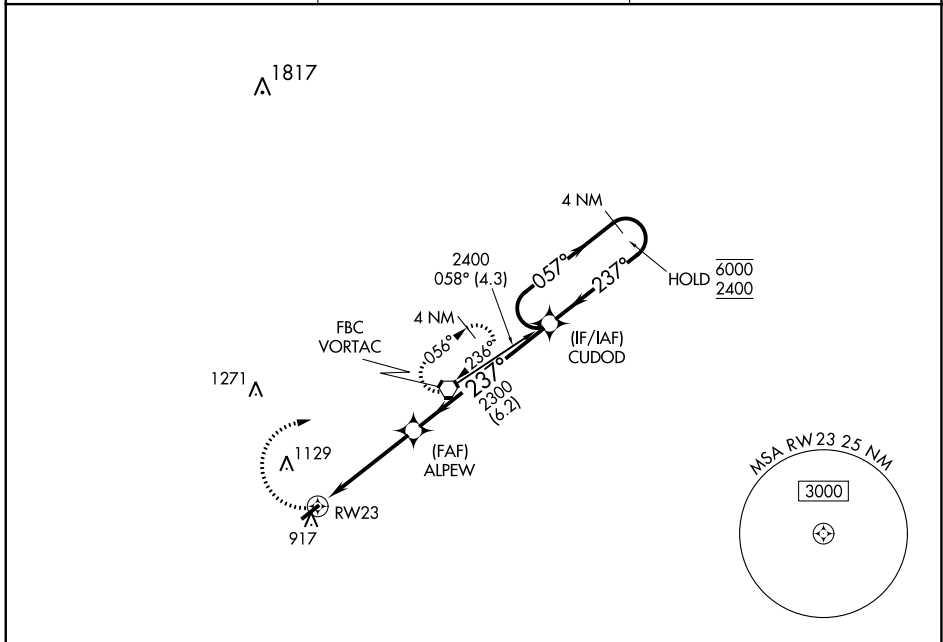
22307

APP CRS <b>237°</b>	Rwy Idg <b>4126</b>
	TDZE <b>850</b>
	Apt Elev <b>851</b>

# RNAV (GPS) RWY 23

BLUFFTON (5G7)

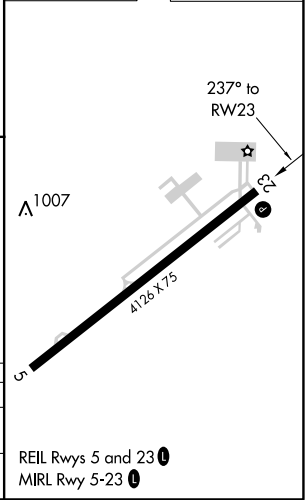
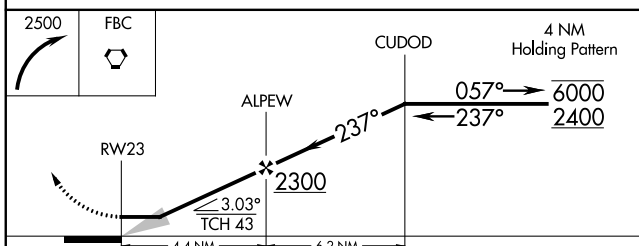
RNP APCH.	MISSED APPROACH: Climbing right turn to 2500 direct FBC VORTAC and hold.	
<p>▼ Use Findlay altimeter setting; when not received use Lima altimeter setting and increase all MDA 20 feet and Circling Cat D visibility ¼ SM.</p> <p>▲ NA</p>		
FDY ASOS <b>132.85</b>	TOLEDO APP CON <b>120.8 317.55</b>	UNICOM <b>122.8 (CTAF) 0</b>



EC-2, 11 JUL 2024 to 08 AUG 2024

EC-2, 11 JUL 2024 to 08 AUG 2024

ELEV 851	TDZE 850
----------	----------



CATEGORY	A	B	C	D
LNVA MDA	1340-1	490 (500-1)	1340-1 $\frac{3}{8}$ 490 (500-1 $\frac{3}{8}$ )	1340-1 $\frac{1}{2}$ 490 (500-1 $\frac{1}{2}$ )
CIRCLING	1360-1 509 (600-1)	1520-1 669 (700-1)	1520-1 $\frac{3}{4}$ 669 (700-1 $\frac{3}{4}$ )	1520-2 669 (700-2)

REIL Rwy 5 and 23 0  
MIRL Rwy 5-23 0

BLUFFTON, OHIO  
Orig-B 26MAR20

40°53'N-83°52'W

# BLUFFTON (5G7) RNAV (GPS) RWY 23