

VORTAC FBC	APP CRS	Rwy Idg	4126
108.2	233°	TDZE	850
Chan 19		Apt Elev	851

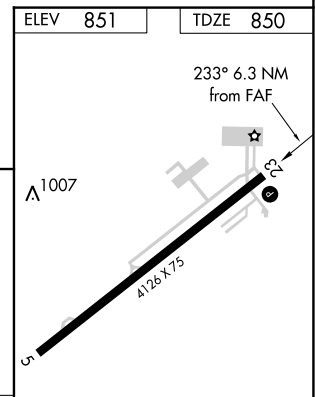
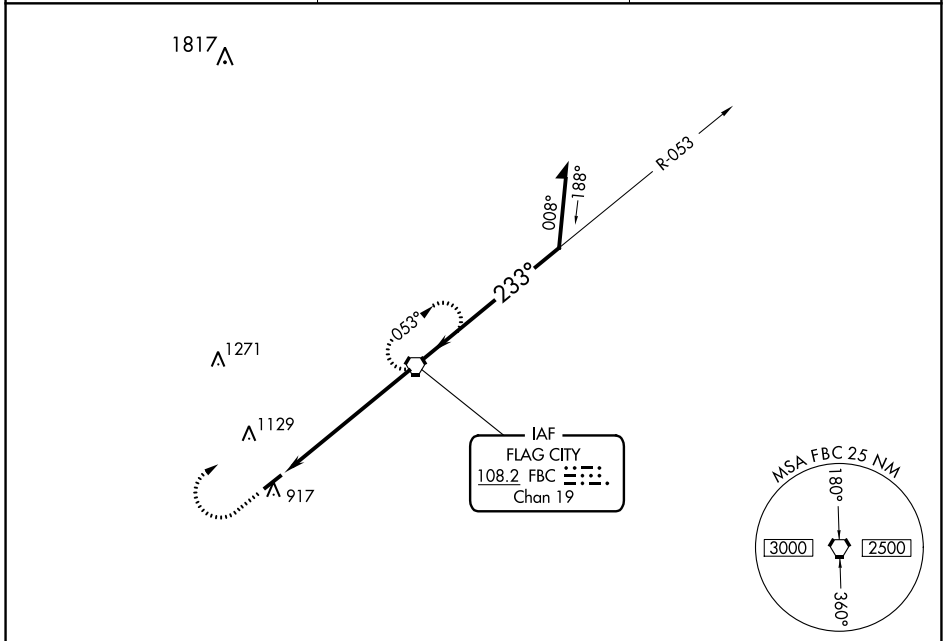
# VOR RWY 23

BLUFFTON (5G7)

**NA** Use Findlay altimeter setting; when not received, use Lima altimeter setting and increase all MDA 20 feet, increase S-23 Cat C 1/8 SM and Circling Cat C/D visibility 1/4 SM.

MISSED APPROACH: Climb to 2500 then right turn direct FBC VORTAC and hold.

FDY ASOS	TOLEDO APP CON	UNICOM
132.85	120.8 317.55	122.8 (CTAF) <b>0</b>



ELEV	851	TDZE	850	
CATEGORY	A	B	C	D
S-23	1360-1	510 (600-1)	1360-1 1/8 510 (600-1 3/8)	1360-1 1/2 510 (600-1 1/2)
<b>C</b> CIRCLING	1360-1 509 (600-1)	1520-1 669 (700-1)	1520-1 3/4 669 (700-1 3/4)	1520-2 669 (700-2)

REIL Rwy 5 and 23	<b>0</b>
MIRL Rwy 5-23	<b>0</b>
FAF to MAP 6.3 NM	
Knots	60 90 120 150 180
Min:Sec	6:18 4:12 3:09 2:31 2:06

EC-2, 11 JUL 2024 to 08 AUG 2024

EC-2, 11 JUL 2024 to 08 AUG 2024