

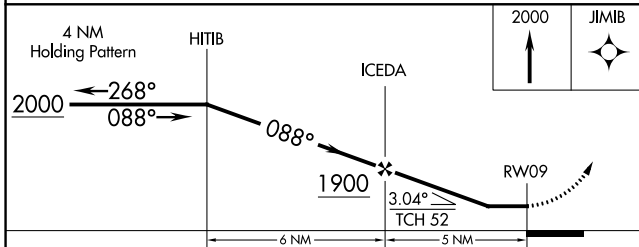
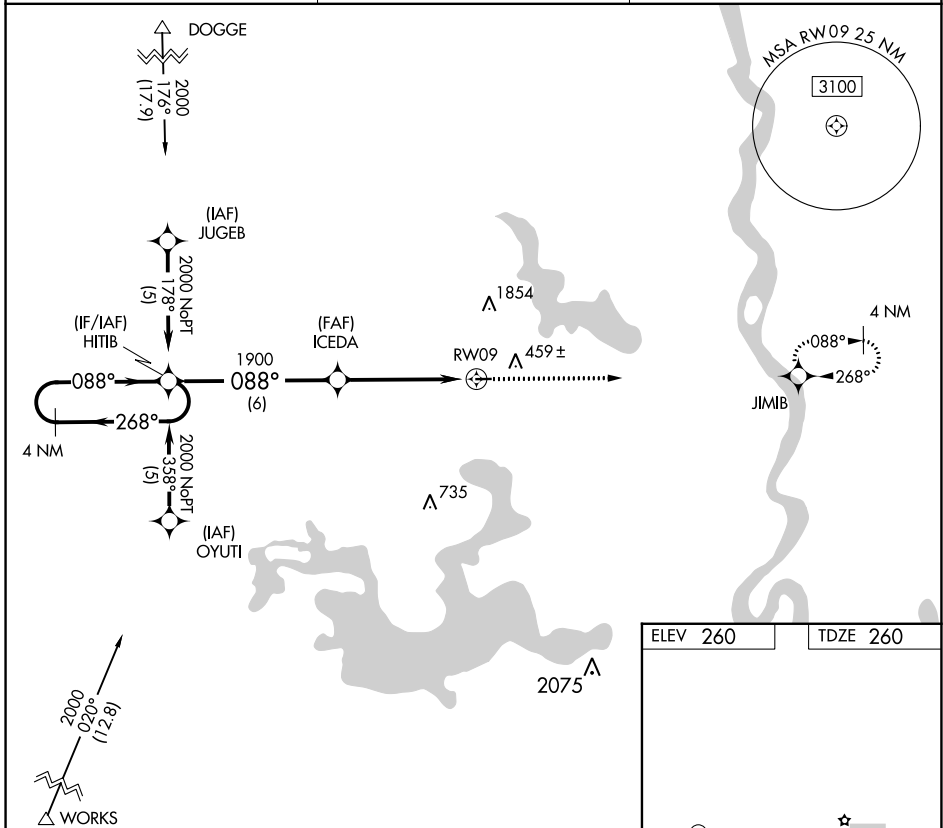
APP CRS	Rwy ldg	<b>2998</b>
<b>088°</b>	TDZE	<b>260</b>
	Apt Elev	<b>260</b>

# RNAV (GPS) RWY 9

VIVIAN (3F4)

RNP APCH.	MISSED APPROACH: Climb to 2000 direct JIMB and hold.
<p><b>▼</b> Use Shreveport Rgnl altimeter setting; when not received, use Shreveport Downtown altimeter setting. Procedure NA at night. Rwy 9 helicopter visibility reduction below 1 SM NA.</p> <p><b>▲ NA</b></p>	

SHREVEPORT APP CON <b>119.9 335.55</b>	GCO <b>135.075</b>	UNICOM <b>122.8 (CTAF) 0</b>
---	-----------------------	---------------------------------



ELEV 260	TDZE 260
<p>MIRL Rwy 9-27 <b>0</b></p> <p>REIL Rwy 9 <b>0</b></p> <p>REIL Rwy 27</p>	

CATEGORY	A	B	C	D
LNAV MDA	860-1	600 (600-1)	860-1 <sup>3</sup> / <sub>4</sub> 600 (600-1 <sup>3</sup> / <sub>4</sub> )	NA

SC-4, 11 JUL 2024 to 08 AUG 2024

SC-4, 11 JUL 2024 to 08 AUG 2024