

VORTAC EIC <b>117.4</b> Chan 121	APP CRS <b>291°</b>	Rwy Idg TDZE Apt Elev	N/A N/A <b>260</b>
----------------------------------------	------------------------	-----------------------------	--------------------------

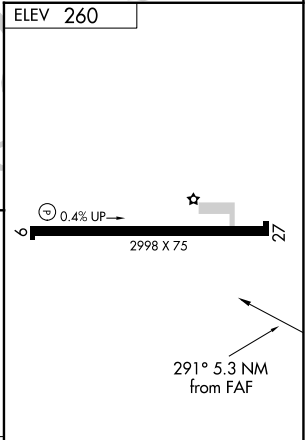
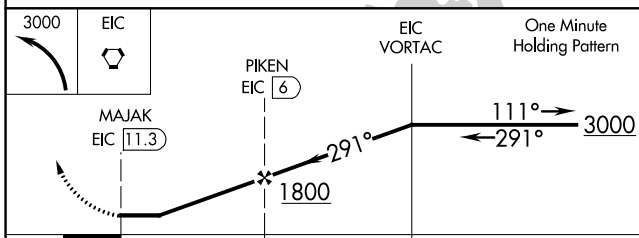
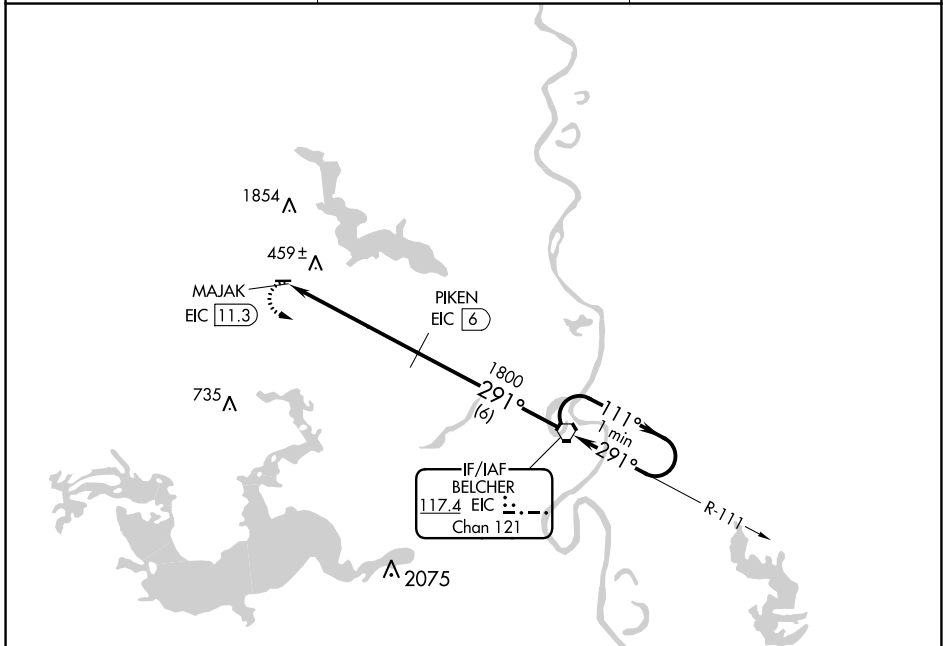
# VOR/DME-A

VIVIAN (3F4)

**⚠** Circling NA north of Rwy 9-27. Use Shreveport Rgnl altimeter setting; when not received, use Shreveport Downtown altimeter setting and increase all MDAs 20 feet. Procedure NA at night. Helicopter visibility reduction below 1 SM NA.

**⚠** MISSED APPROACH: Climbing left turn to 3000 direct EIC VORTAC and hold.

SHREVEPORT APP CON <b>119.9 335.55</b>	GCO <b>135.075</b>	UNICOM <b>122.8</b> (CTAF) <b>📻</b>
-------------------------------------------	-----------------------	----------------------------------------



CATEGORY	A	B	C	D	MIRL Rwy 9-27 <b>📻</b> REIL Rwy 9 <b>📻</b> REIL Rwy 27
CIRCLING	860-1	600 (600-1)	900-1¼ 640 (700-1¼)	NA	

SC-4, 11 JUL 2024 to 08 AUG 2024

SC-4, 11 JUL 2024 to 08 AUG 2024