

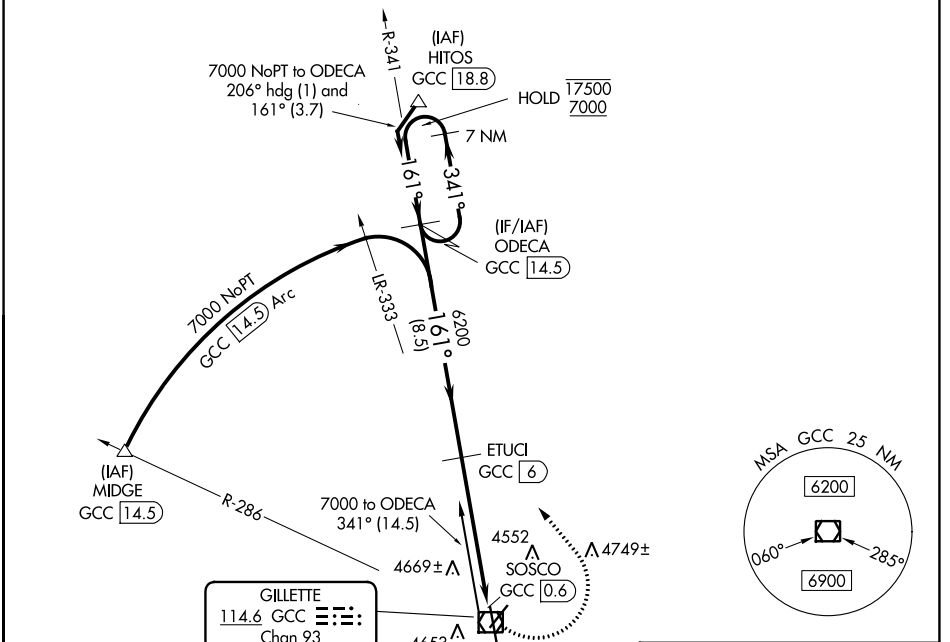
VOR/DME GCC 114.6 Chan 93	APP CRS 161°	Rwy Idg TDZE Apt Elev	7500 4337 4365
---	------------------------	-----------------------------	---

VOR RWY 16

NORTHEAST WYOMING RGNL (GCC)

DME required.	MISSED APPROACH: Climbing left turn to 7000 on heading 311° and GCC R-341 to ODECA/14.5 DME and hold.
<p>▼ Circling Rwy 3 NA at night. Rwy 16 helicopter visibility reduction below ¾ SM NA.</p> <p>▲</p>	

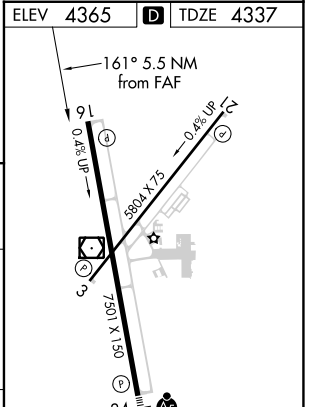
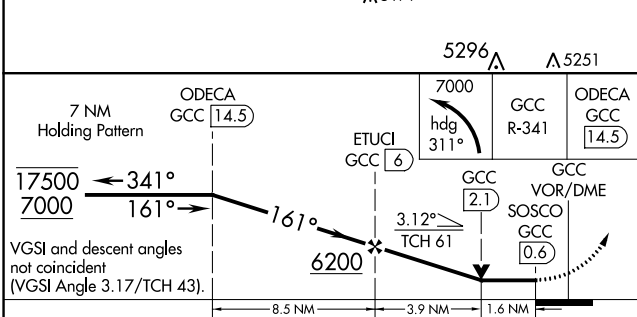
ASOS 124.175	DENVER CENTER 135.6 363.025	UNICOM 122.95	CTAF 118.5
------------------------	---------------------------------------	-------------------------	----------------------



NW-1, 11 JUL 2024 to 08 AUG 2024

NW-1, 11 JUL 2024 to 08 AUG 2024

ELEV 4365		TDZE 4337
<p>▲ 4970 5057</p> <p>▲ 5179 ▲ 4902</p> <p>5296 ▲ ▲ 5251</p>		



CATEGORY	A	B	C	D
S-16	4920-1	583 (600-1)	4920-1¾	583 (600-1¾)
CIRCLING	5040-1 675 (700-1)	5240-1¼ 875 (900-1¼)	5400-3	1035 (1100-3)

HIRL Rwy 16-34

REIL Rws 3, 16, and 21

MIRL Rwy 3-21