

WAAS CH <b>86618</b> <b>W13A</b>	APP CRS <b>134°</b>	Rwy Idg TDZE Apt Elev	<b>6000</b> <b>130</b> <b>130</b>
--	------------------------	-----------------------------	---

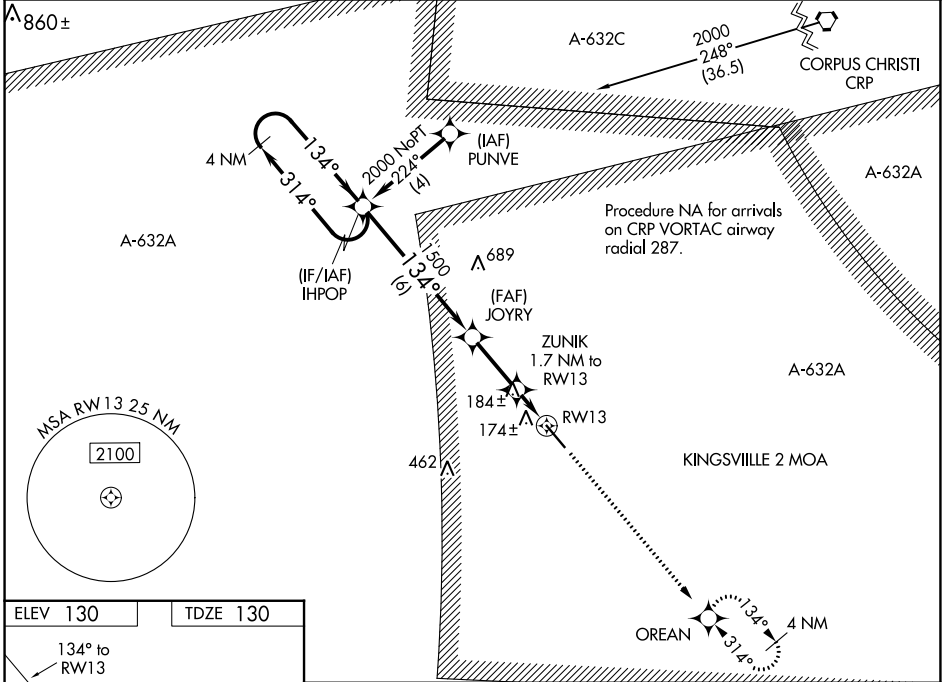
# RNAV (GPS) RWY 13

KLEBERG COUNTY (IKG)

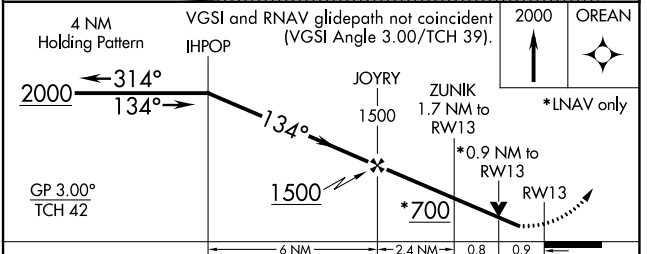
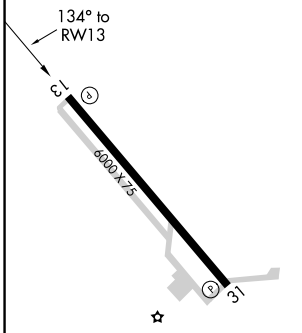
**NA** For uncompensated Baro-VNAV systems, LNAV/VNAV NA below -15°C (5°F) or above 48°C (118°F). DME/DME RNP-0.3 NA. Visibility reduction by helicopters NA. When local altimeter setting not received, use Alice altimeter setting and increase all DA 33 feet and all MDA 40 feet and LPV all Cats, LNAV/VNAV all Cats, and LNAV Cat D visibility ¼ mile. Baro-VNAV and VDP NA when using Alice altimeter setting.

MISSED APPROACH: Climb to 2000 direct OREAN and hold.

AWOS-3P <b>119.075</b>	KINGSVILLE APP CON * <b>119.9 290.45</b>	UNICOM <b>122.7 (CTAF)</b>
---------------------------	---	-------------------------------



ELEV <b>130</b>	TDZE <b>130</b>
-----------------	-----------------



CATEGORY	A	B	C	D
LPV DA		380-¾	250 (300-¾)	
LNAV/VNAV DA		444-1	314 (400-1)	
LNAV MDA		440-1	310 (400-1)	
CIRCLING	500-1	580-1	580-1½	680-2
	370 (400-1)	450 (500-1)	450 (500-1½)	550 (600-2)

REIL Rwy 13 and 31 **1**  
MIRL Rwy 13-31 **1**

SC-3, 11 JUL 2024 to 08 AUG 2024

SC-3, 11 JUL 2024 to 08 AUG 2024