

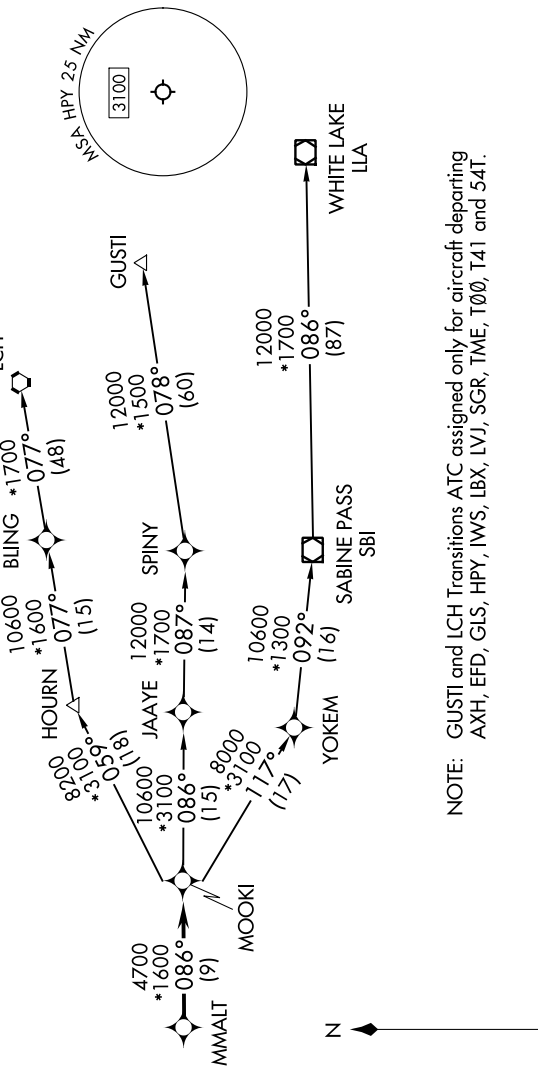
# MMALT SEVEN DEPARTURE (RNAV)

SC-5, 11 JUL 2024 to 08 AUG 2024

RNAV 1 - DME/DME/IRU or GPS.

RADAR required.

HOUSTON DEP CON  
134.45 284.0  
CTAF  
122.8



NOTE: GUSTI and LCH Transitions ATC assigned only for aircraft departing AXH, EFD, GLS, HPY, IWS, LBX, LVJ, SGR, TME, T00, T41 and 54T.

## DEPARTURE ROUTE DESCRIPTION

**TAKEOFF RUNWAY 14:** Climb on heading 140° to 540, for RADAR vectors to MMALT, thence. . . .  
**TAKEOFF RUNWAY 32:** Climb on heading 320° to 540, for RADAR vectors to MMALT, thence. . . .  
 . . . on track 086° to MOOKI, then on (transition). Maintain ATC assigned altitude.  
 Expect filed altitude 10 minutes after departure.

- GUSTI TRANSITION (MMALT7.GUSTI)
- LAKE CHARLES TRANSITION (MMALT7.LCH)
- WHITE LAKE TRANSITION (MMALT7.LLA)

**TAKEOFF MINIMUMS**  
 Rwy 14, 32: Standard with minimum climb of 500'/NM to 540.

NOTE: Chart not to scale.

SC-5, 11 JUL 2024 to 08 AUG 2024

# MMALT SEVEN DEPARTURE (RNAV)