

APP CRS	Rwy Idg	3000
056°	TDZE	1022
	Apt Elev	1031

RNAV (GPS) RWY 5

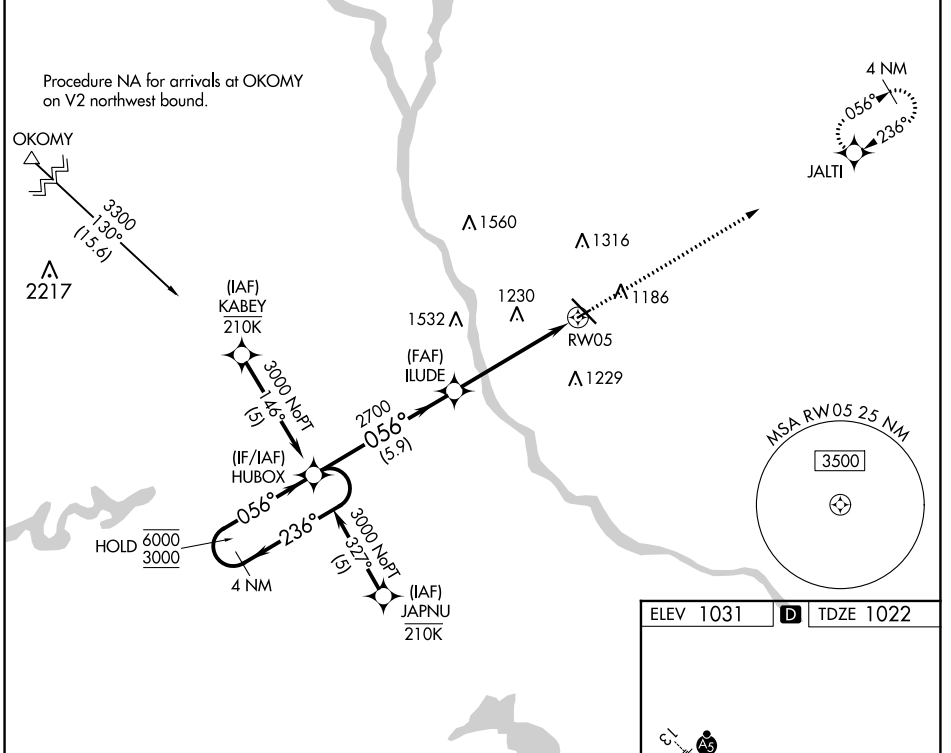
ST CLOUD RGNL (STC)

RNP APCH - GPS.

⚠ Rwy 5 helicopter visibility reduction below 3/4 SM NA. When local altimeter setting not received, use Little Falls altimeter setting, increase all MDAs 80 feet and LNAV visibility Cat C 1/4 SM. VDP NA when using Little Falls altimeter setting.

MISSED APPROACH: Climb to 3000 direct JALTI and hold.

ATIS 119.375	MINNEAPOLIS CENTER 121.05 235.775	ST. CLOUD TOWER * 118.25 (CTAF) 0	GND CON 123.75
------------------------	---	---	--------------------------



NC-1, 11 JUL 2024 to 08 AUG 2024

NC-1, 11 JUL 2024 to 08 AUG 2024

VGSI and descent angles not coincident (VGSI Angle 3.00/TCH 31).

4 NM Holding Pattern

HUBOX

ILUDE

3000 JALTI

6000 ← 236°

3000 → 056°

056°

3.00° TCH 40

1.4 NM to RWY05

2700

5.9 NM

3.8 NM

1.4 NM

CATEGORY	A	B	C	D
LNAV MDA	1500-1	478 (500-1)	1500-1 3/8 478 (500-1 3/8)	NA
CIRCLING	1500-1	469 (500-1)	1620-1 1/2 589 (600-1 1/2)	NA

ELEV 1031	D	TDZE 1022
-----------	----------	-----------

MIRL Rwy 5-23 **0**

HIRL Rwy 13-31 **0**