

WAAS CH <b>56611</b> W23A	APP CRS <b>233°</b>	Rwy Idg <b>4699</b> TDZE <b>431</b> Apt Elev <b>434</b>
---------------------------------	------------------------	---

# RNAV (GPS) RWY 23

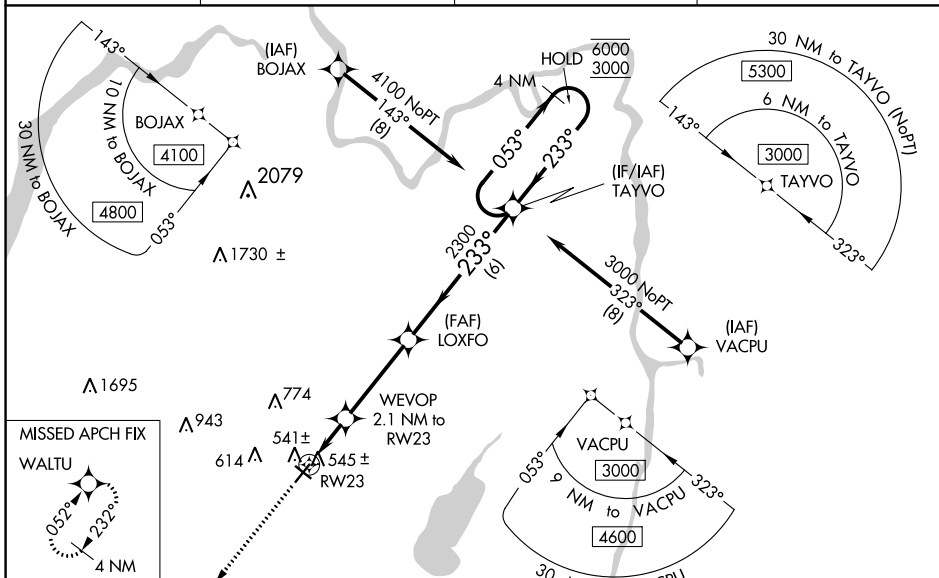
SARATOGA COUNTY (5B2)

RNP APCH

**NA** Baro-VNAV and VDP NA when using Albany altimeter setting. Rwy 23 helicopter visibility reduction below 3/4 SM NA. For uncompensated Baro-VNAV systems, LNAV/VNAV NA below -15°C or above 54°C. Circling NA at night. When local altimeter setting not received, use Albany altimeter setting and increase all DAs 63 feet and MDAs 80 feet. Increase LPV and LNAV/VNAV all Cats visibility 1/8 SM, LNAV Cats C/D visibility 3/8 SM, and Circling Cat C visibility 1/4 SM.

MISSED APPROACH: Climb to 3000 direct WALTU and hold.

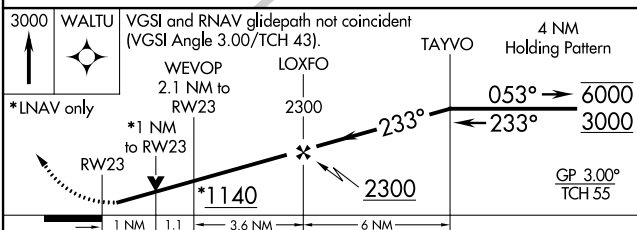
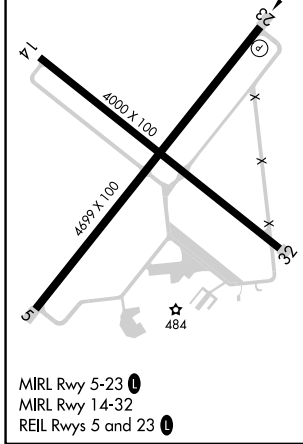
AWOS-3 <b>132.025</b>	ALBANY APP CON <b>118.05 263.075</b>	CLNC DEL (GCO) <b>118.125</b>	UNICOM <b>123.075 (CTAF) 0</b>
--------------------------	---	----------------------------------	-----------------------------------



NE-2, 11 JUL 2024 to 08 AUG 2024

NE-2, 11 JUL 2024 to 08 AUG 2024

ELEV <b>434</b>	TDZE <b>431</b>
-----------------	-----------------



CATEGORY	A	B	C	D
LPV DA		698-7/8	267 (300-7/8)	
LNAV/VNAV DA		706-7/8	275 (300-7/8)	
LNAV MDA		800-1	369 (400-1)	
<b>CIRCLING</b>	980-1 546 (600-1)	1080-1 646 (700-1)	1140-2 706 (800-2)	1340-3 906 (1000-3)