

| | | | |
|--|------------------------|---|-------------|
| WAAS CH 49035 W27A | APP CRS 273° | Rwy Idg TDZE 1198 Apt Elev 1198 | 3499 |
|--|------------------------|---|-------------|

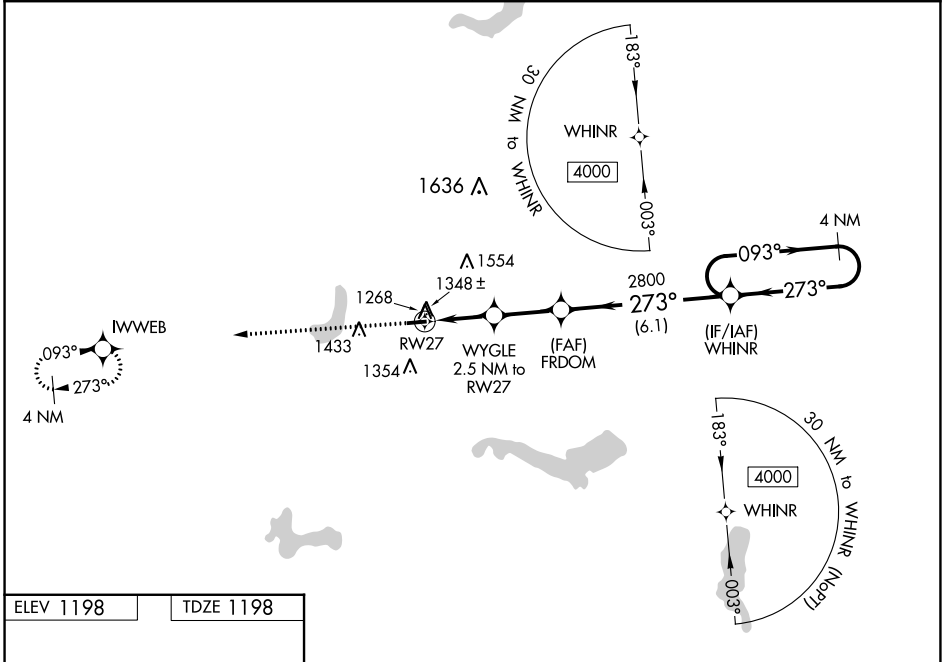
RNAV (GPS) RWY 27

PORTAGE COUNTY (POV)

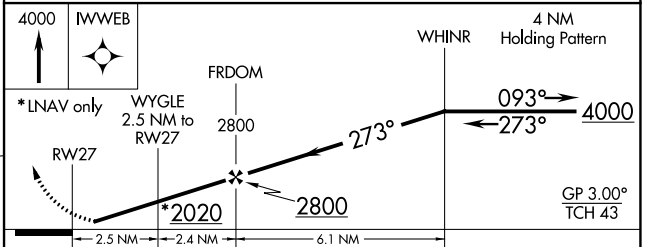
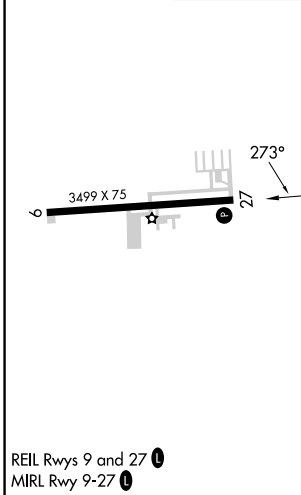
⚠ Baro-VNAV NA when using Akron-Canton Rgnl altimeter setting. For uncompensated Baro-VNAV systems, LNAV/VNAV NA below -17°C (2°F) or above 54°C (130°F). DME/DME RNP-0.3 NA.
⚠ When local altimeter setting not received, use Akron-Canton Rgnl altimeter setting and increase all DA 50 feet and all MDA 60 feet; increase LPV all Cats visibility 1/8 mile, LNAV/VNAV all Cats visibility 1/4 mile and Circling Cat C visibility 1/4 mile. Helicopter visibility reduction below 1 SM NA. Night landing Cat C: Procedure NA.

MISSED APPROACH:
Climb to 4000 direct IWWEB and hold.

| | | | |
|--------------------------|--|---------------------------|----------------------------------|
| AWOS-3 118.675 | CLEVELAND APP CON* 125.5 371.875 | CLNC DEL 125.65 | UNICOM 123.05 (CTAF) 1 |
|--------------------------|--|---------------------------|----------------------------------|



| | |
|-----------|-----------|
| ELEV 1198 | TDZE 1198 |
|-----------|-----------|



| CATEGORY | A | B | C | D |
|-------------------|----------------------------|----------------------------|--------------------|----|
| LPV DA | 1471-1 273 (300-1) | | | NA |
| LNAV/VNAV DA | 1546-1 1/8 348 (400-1 1/8) | | | NA |
| LNAV MDA | 1640-1 442 (500-1) | 1640-1 3/8 442 (500-1 3/8) | | NA |
| C CIRCLING | 1740-1 542 (600-1) | 1800-1 602 (700-1) | 1920-2 722 (800-2) | NA |