

RAVENNA, OHIO

AL-5844 (FAA)

24025

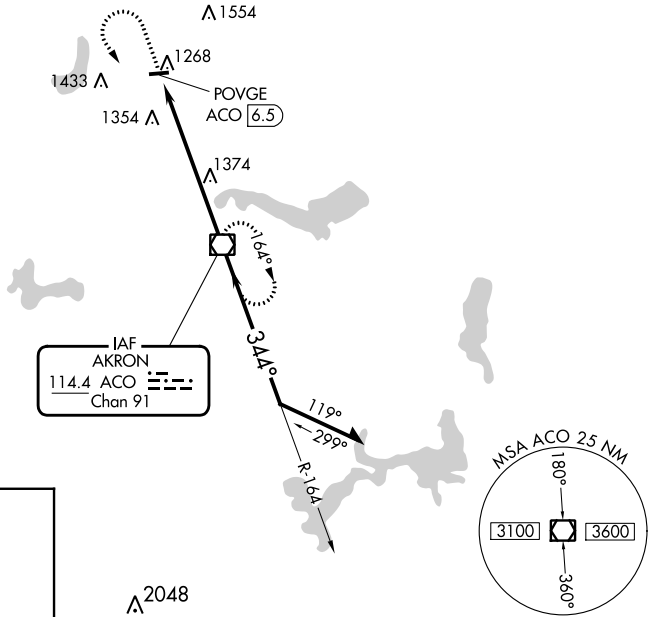
VOR/DME ACO 114.4 Chan 91	APP CRS 344°	Rwy Idg TDZE Apt Elev	N/A N/A 1198
---	------------------------	-----------------------------	---

VOR-A
PORTAGE COUNTY (POV)

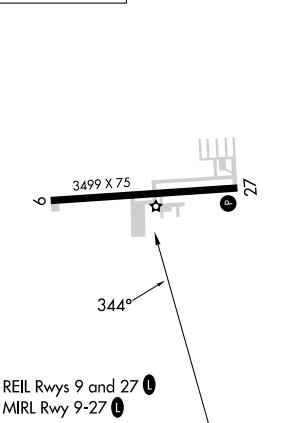
▼ When local altimeter setting not received, use Akron-Canton Rgnl altimeter setting and increase all MDA 60 feet.
▲ Circling Cat C NA at night.

MISSED APPROACH: Climb to 2900 then left turn direct ACO VOR/DME and hold.

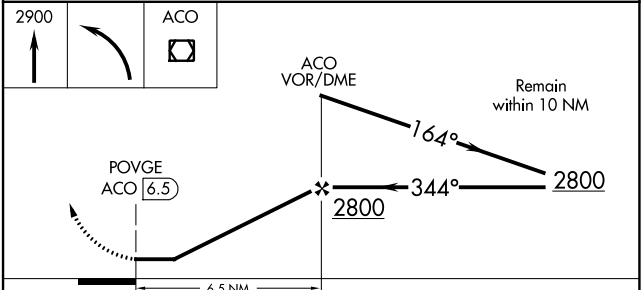
AWOS-3 118.675	CLEVELAND APP CON★ 125.5 371.875	CLNC DEL 125.65	UNICOM 123.05 (CTAF) 📞
--------------------------	--	---------------------------	---



ELEV 1198



REIL Rwys 9 and 27 **📞**
MIRL Rwy 9-27 **📞**



FAF to MAP 6.5 NM					CATEGORY	A	B	C	D
Knots	60	90	120	150	1740-1	1800-1	1920-2		NA
Min:Sec	6:30	4:20	3:15	2:36	542 (600-1)	602 (700-1)	722 (800-2)		

RAVENNA, OHIO
Amdt 6B 30JAN20

41°13'N - 81°15'W

PORTAGE COUNTY (POV)
VOR-A

EC-2, 11 JUL 2024 to 08 AUG 2024

EC-2, 11 JUL 2024 to 08 AUG 2024