

LOC/DME I-LHM 108.75 Chan 24 (Y)	APP CRS 151°	Rwy Idg TDZE 121 Apt Elev 121
--	------------------------	---

ILS or LOC RWY 15

LINCOLN RGNL/KARL HARDER FLD (LHM)

▼ When local altimeter setting not received, use Beale AFB altimeter setting and increase DA to 361 feet and all MDAs 40 feet; increase S-LOC 1.5 Cat C/D and Circling Cat D visibility $\frac{1}{4}$ SM. VDP NA with Beale AFB altimeter setting. WIDBO fix minimums: for inop ALS, increase S-LOC 1.5 Cat D visibility to 1 mile.

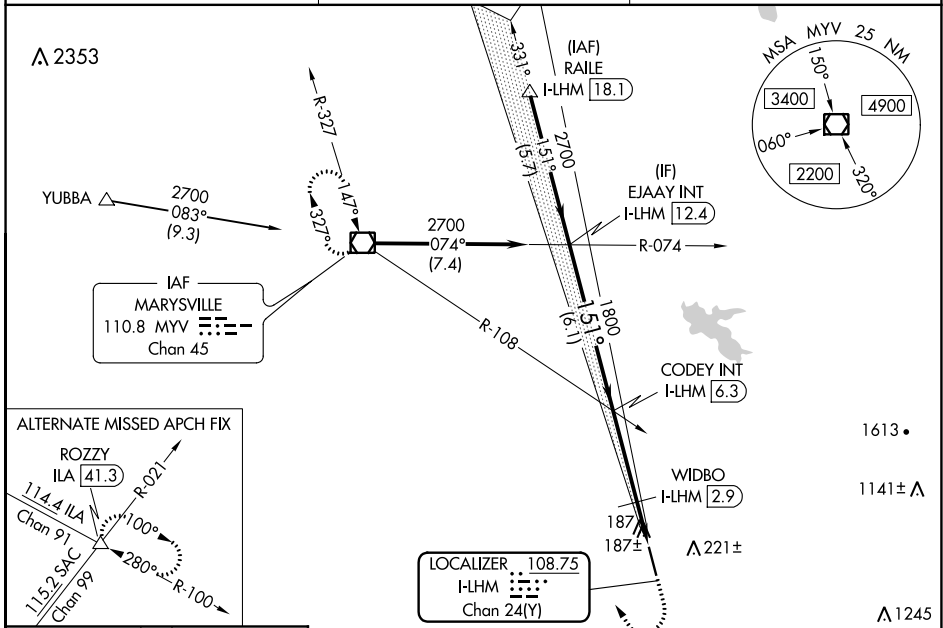


MISSED APPROACH: Climb to 1200 then climbing right turn to 3000 direct MYV VOR/DME and hold.

AWOS-3
124.25

NORCAL APP CON
125.4 259.1

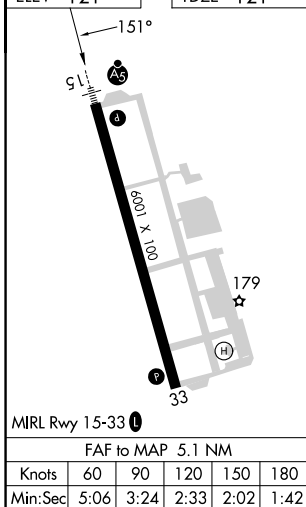
UNICOM
123.0 (CTAF)



SW-2, 11 JUL 2024 to 08 AUG 2024

SW-2, 11 JUL 2024 to 08 AUG 2024

ELEV 121	TDZE 121
----------	----------



EJAAY INT I-LHM (12.4)	#640 when using Beale AFB altimeter setting.	1200	3000	MYV
CODEY INT I-LHM (6.3)		↑	↷	◻
WIDBO I-LHM (2.9)				* LOC only
2700	1800	* I-LHM (2.1)	I-LHM (1.2)	
GS 3.00° TCH 46	1800	**600		
	6.1 NM	3.4 NM	0.8 NM	0.9 NM
CATEGORY	A	B	C	D
S-ILS 15	321- $\frac{1}{2}$ 200 (200- $\frac{1}{2}$)			
S-LOC 15	600- $\frac{1}{2}$	479 (500- $\frac{1}{2}$)	600- $\frac{3}{4}$ 479 (500- $\frac{3}{4}$)	600-1 479 (500-1)
CIRCLING	600-1	479 (500-1)	600-1 $\frac{1}{2}$ 479 (500-1 $\frac{1}{2}$)	760-2 639 (700-2)
WIDBO FIX MINIMUMS				
S-LOC 15	460- $\frac{1}{2}$ 339 (400- $\frac{1}{2}$)			460- $\frac{3}{4}$ 339 (400- $\frac{3}{4}$)
CIRCLING	520-1 399 (400-1)	580-1 459 (500-1)	600-1 $\frac{1}{2}$ 479 (500-1 $\frac{1}{2}$)	760-2 639 (700-2)