

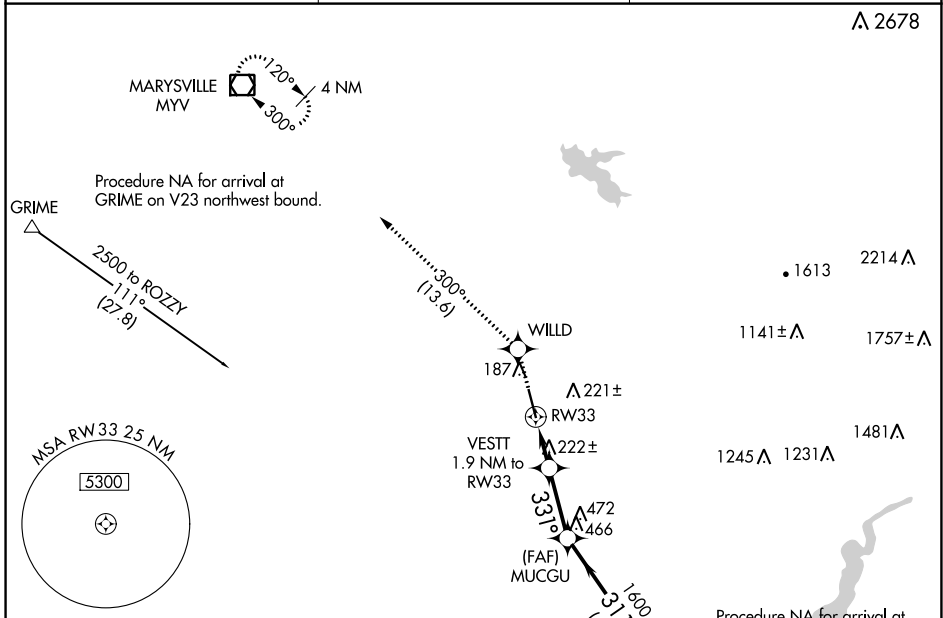
APP CRS	Rwy Idg	<b>6001</b>
<b>331°</b>	TDZE	<b>121</b>
	Apt Elev	<b>121</b>

# RNAV (GPS) RWY 33

LINCOLN RGNL/KARL HARDER FLD (LHM)

RNP APCH.	MISSED APPROACH: Climb to 2000 direct WILLD and on track 300° to MYV VOR/DME and hold.
<p><b>▼</b> Rwy 33 helicopter visibility reduction below 3/4 SM NA. When local altimeter setting not received, use Beale AFB altimeter setting and increase all MDA 40 feet, and increase LNAV Cat C/D visibility 1/8 mile. VDP NA with Beale AFB altimeter setting.</p>	

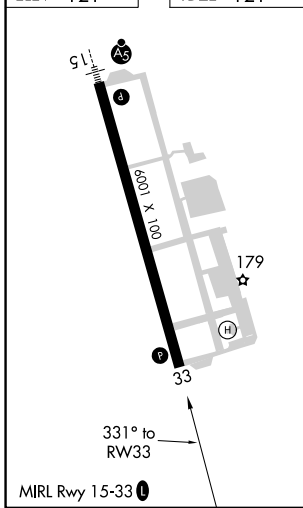
AWOS-3 <b>124.25</b>	NORCAL APP CON <b>125.4 259.1</b>	UNICOM <b>123.0 (CTAF) 0</b>
-------------------------	--------------------------------------	---------------------------------



SW-2, 11 JUL 2024 to 08 AUG 2024

SW-2, 11 JUL 2024 to 08 AUG 2024

ELEV 121	TDZE 121
----------	----------



2000	WILLD	tr 300°	MYV	ROZZY	4 NM Holding Pattern
VESTT 1.9 NM to RW33		MUCCGU	ROZZY 4 NM Holding Pattern		
RW33 0.9 NM to RW33		311° 1600		131° 6000	
3.04° TCH 31		311°		311° 2500	
0.9 NM		1 NM		2.6 NM	
0.9 NM		1 NM		2.6 NM	
CATEGORY	A	B	C	D	
LNAV MDA	480-1 359 (400-1)				