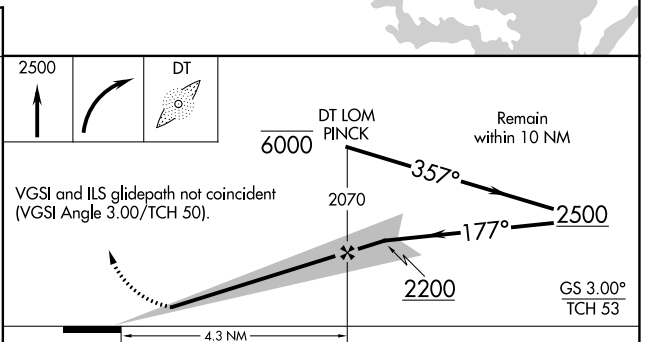
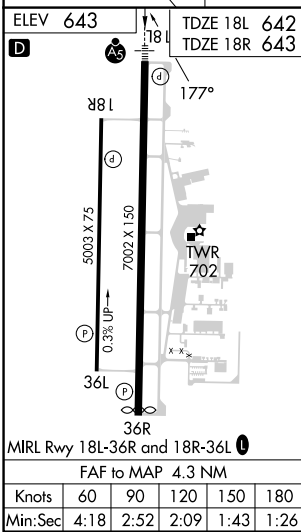
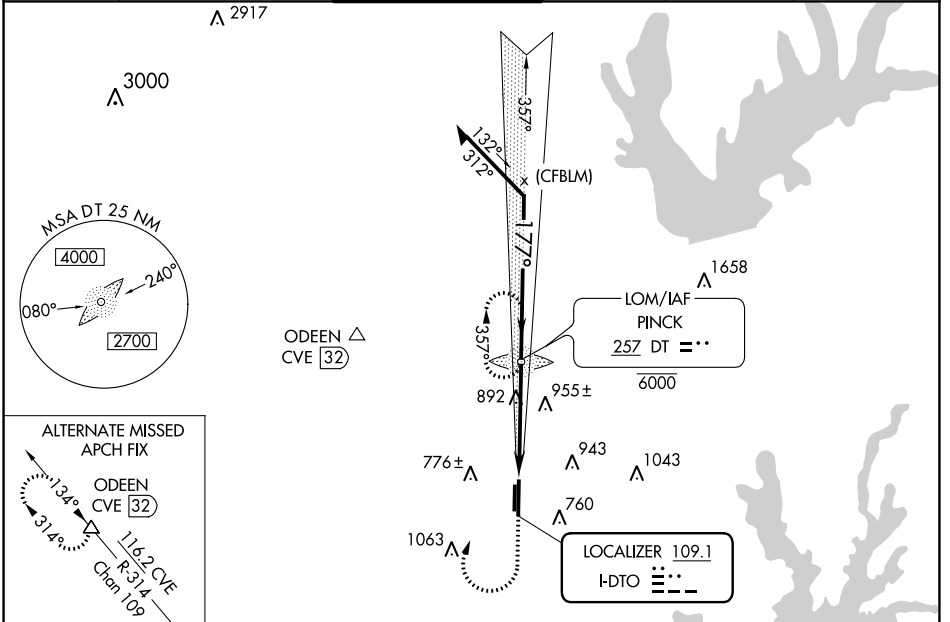


LOC I-DTO <b>109.1</b>	APP CRS <b>177°</b>	Rwy Idg 18L 18R TDZE <b>6502 5003</b> <b>642 643</b> Apt Elev <b>643 643</b>
---------------------------	------------------------	--

# ILS or LOC RWY 18L

DENTON ENTERPRISE (D'TO)

ADF required. RADAR required for procedure entry.				MALSR AG	MISSED APPROACH: Climb to 2500 then right turn direct PINCK LOM and hold.
<p>▼ For inop ALS, increase S-ILS 18L all Cts visibility to ½ SM. For inop ALS, increase S-LOC 18L Cat C/D to 1½ SM.</p> <p>▲ NA</p>					
ATIS <b>119.325</b>	REGIONAL APP CON <b>118.1 306.95</b>	DENTON TOWER* <b>119.95</b> (CTAF) <b>0</b>	GND CON <b>123.95</b>	CLNC DEL <b>123.95</b>	UNICOM <b>122.95</b>



CATEGORY	A	B	C	D
S-ILS 18L	842-½		200 (200-½)	
S-LOC 18L	1160-½	518 (600-½)	1160-1	518 (600-1)
SIDESTEP 18R	1260-1	617 (700-1)	1260-1¾ 617 (700-1¾)	1260-2 617 (700-2)
CIRCLING	1260-1	617 (700-1)	1380-2 737 (800-2)	1380-2¼ 737 (800-2¼)

SC-2, 11 JUL 2024 to 08 AUG 2024

SC-2, 11 JUL 2024 to 08 AUG 2024