

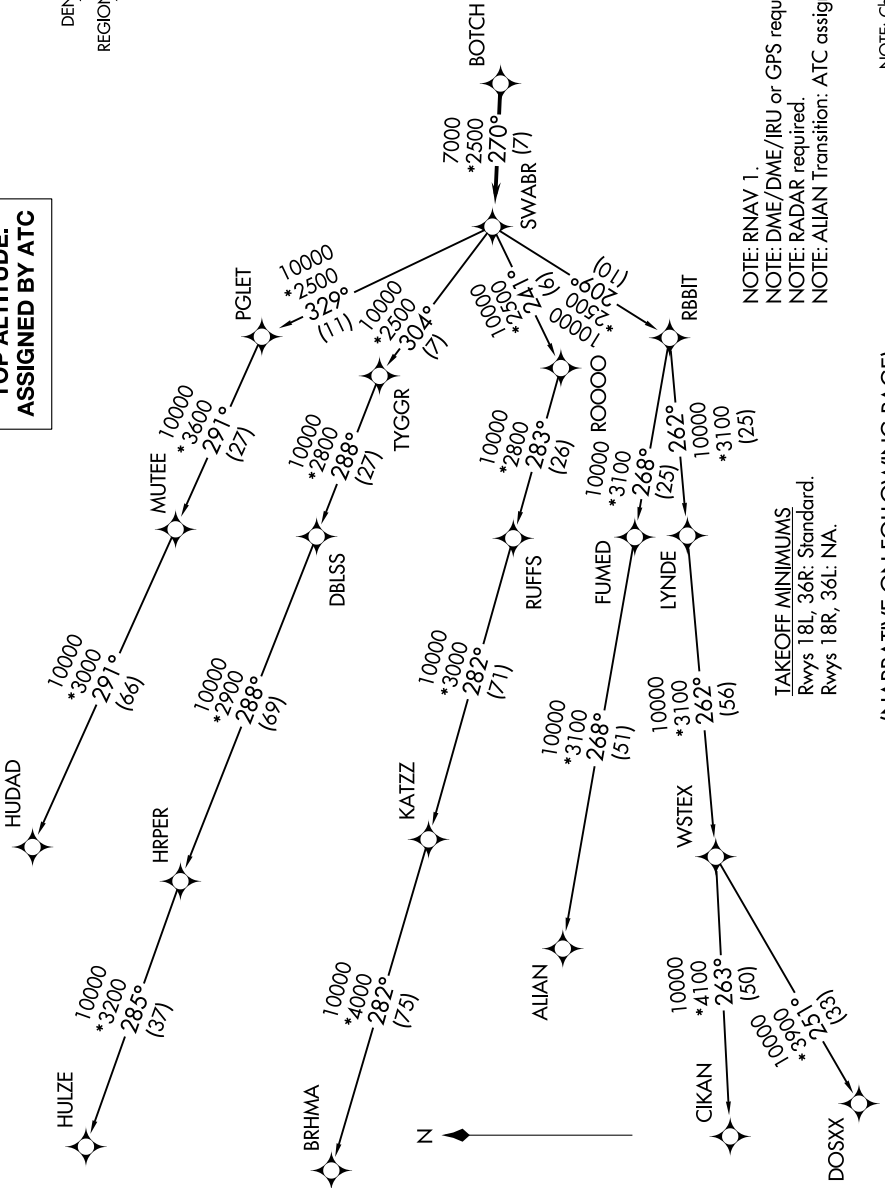
SWABR ONE DEPARTURE (RNAV)

DENTON, TEXAS

SC-2, 11 JUL 2024 to 08 AUG 2024

TOP ALTITUDE: ASSIGNED BY ATC

CLNC DEL
123.95
GND CON
123.95
DENTON TOWER*
119.95 (CTAF)
REGIONAL DEP CON
118.1 306.95



NOTE: RNAV 1.
NOTE: DME/DME/IRU or GPS required.
NOTE: RADAR required.
NOTE: ALIAN Transition: ATC assigned only.

TAKEOFF MINIMUMS
Rwys 18L, 36R: Standard.
Rwys 18R, 36L: NA.

NOTE: Chart not to scale.

(NARRATIVE ON FOLLOWING PAGE)

SC-2, 11 JUL 2024 to 08 AUG 2024

SWABR ONE DEPARTURE (RNAV)

DENTON, TEXAS

DENTON ENTERPRISE (D'TO)