

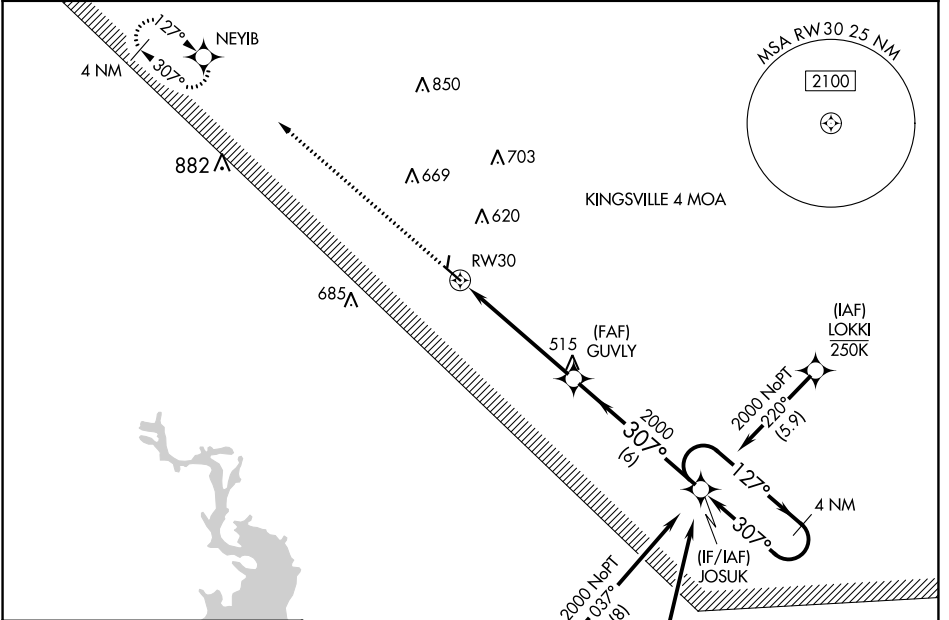
WAAS CH <b>53741</b> <b>W30A</b>	APP CRS <b>307°</b>	Rwy Idg TDZE <b>262</b> Apt Elev <b>273</b>	<b>4553</b>
--	------------------------	---	-------------

# RNAV (GPS) RWY 30

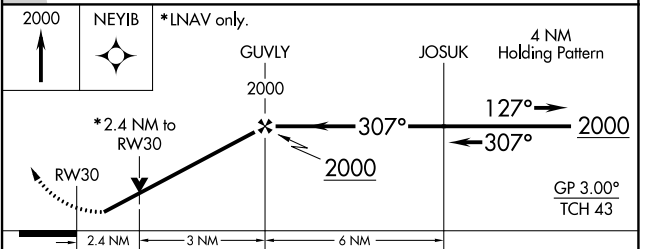
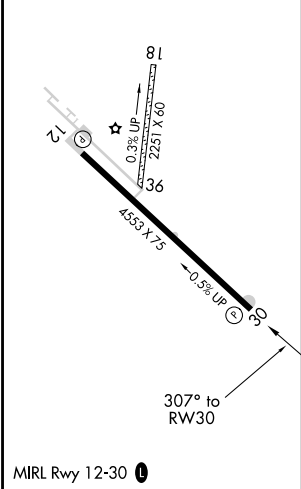
BEEVILLE MUNI (BEA)

RNP APCH.	MISSED APPROACH: Climb to 2000 direct NEYIB and hold.
<p>▼ For uncompensated Baro-VNAV systems, LNAV/VNAV NA below -15°C (5°F) or above 54°C (130°F). Circling Rwy 18 and 36 NA at night. Rwy 30 helicopter visibility reduction below 3/4 SM NA.</p>	

AWOS-3 <b>118.675</b>	HOUSTON CENTER <b>134.6 322.5</b>	UNICOM <b>122.8 (CTAF) 0</b>
--------------------------	--------------------------------------	---------------------------------



ELEV <b>273</b>	TDZE <b>262</b>
-----------------	-----------------



CATEGORY	A	B	C	D
LPV DA	517-1	255 (300-1)		NA
LNAV/VNAV DA	540-1	278 (300-1)		NA
LNAV MDA	1060-1 798 (800-1)	1060-1 1/4 798 (800-1 1/4)	1060-2 1/2 798 (800-2 1/2)	NA
<b>C</b> CIRCLING	1060-1 787 (800-1)	1060-1 1/4 787 (800-1 1/4)	1060-2 1/2 787 (800-2 1/2)	NA