

VORTAC THX <b>111.4</b> Chan <b>51</b>	APP CRS <b>106°</b>	Rwy Idg TDZE Apt Elev	<b>4553</b> <b>268</b> <b>273</b>
--	------------------------	-----------------------------	---

# VOR/DME RWY 12

BEEVILLE MUNI (B.E.A)

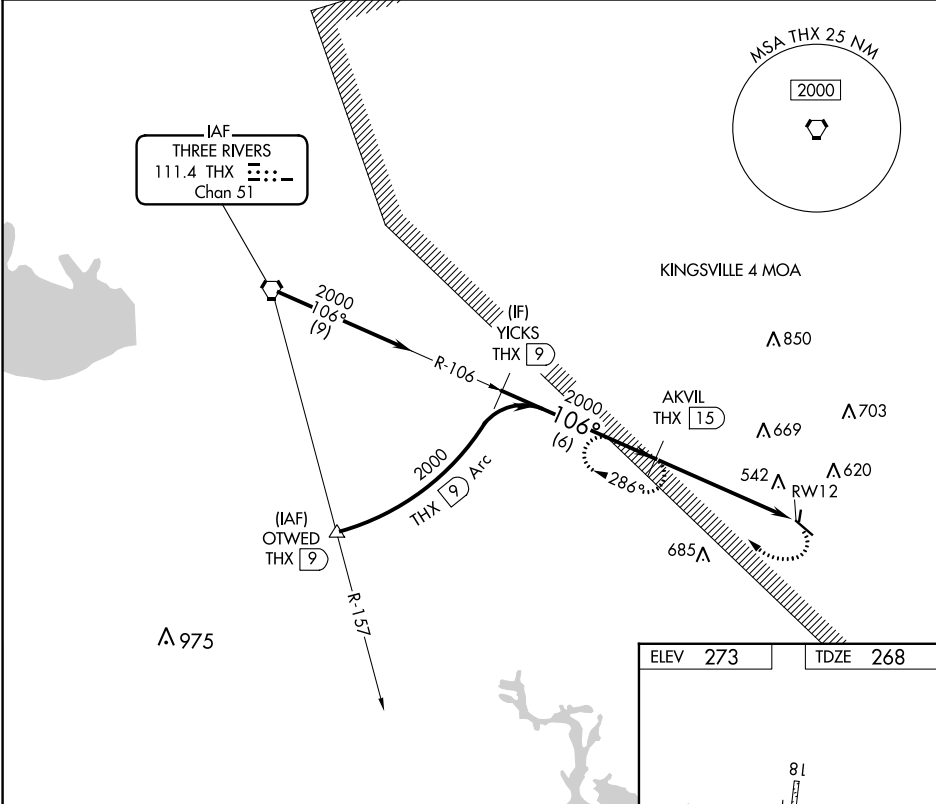
**▼** Use Corpus Christi Intl altimeter setting.  
**▲** NA Circling NA to Rwys 18 and 36.

**MISSED APPROACH:** Climbing right turn to 2000 via THX VORTAC R-106 to AKVIL/THX VORTAC 15 DME and hold. Continue climb-in-hold to 2000.

AWOS-3  
**118.675**

HOUSTON CENTER  
**134.6 322.5**

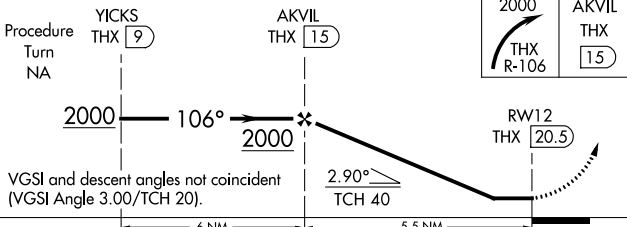
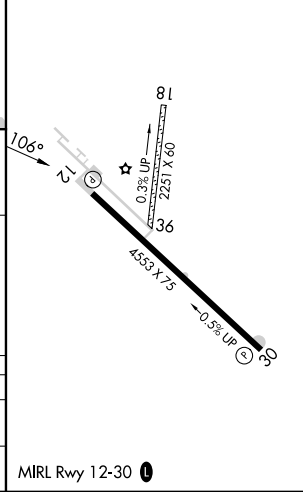
UNICOM  
**122.8 (CTAF) 0**



SC-3, 11 JUL 2024 to 08 AUG 2024

SC-3, 11 JUL 2024 to 08 AUG 2024

ELEV 273	TDZE 268
----------	----------



CATEGORY	A	B	C	D
S-12	1000-1 732 (800-1)	1000-1¼ 732 (800-1¼)	1000-2 732 (800-2)	NA
<b>C</b> CIRCLING	1000-1 727 (800-1)	1020-1¼ 747 (800-1¼)	1120-2½ 847 (900-2½)	NA

MIRL Rwy 12-30 0