

APP CRS	Rwy Idg	3400
009°	TDZE	580
	Apt Elev	585

RNAV (GPS) RWY 1

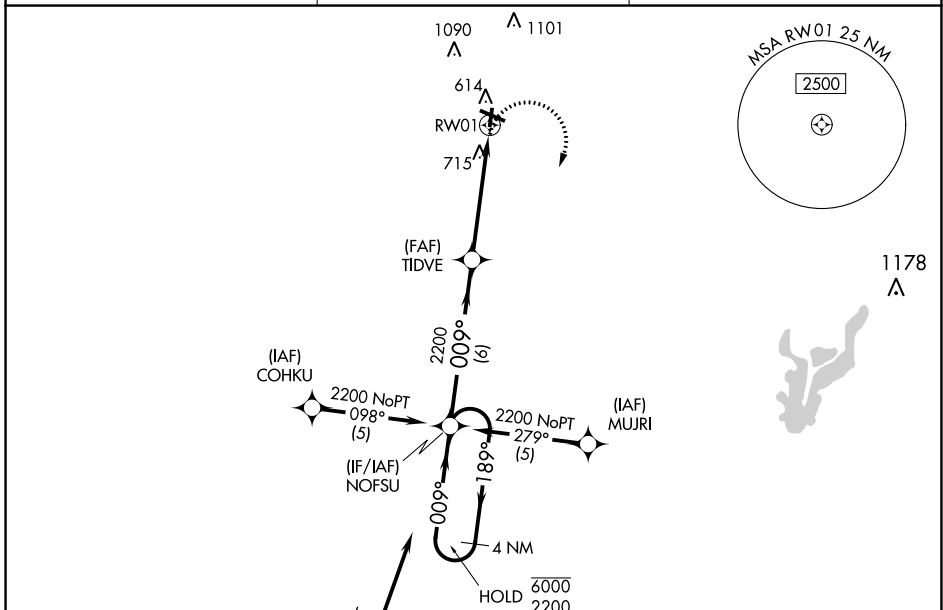
EFFINGHAM COUNTY MEML (1H2)

RNP APCH - GPS.

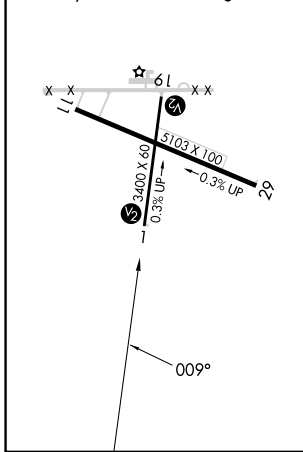
▼ Rwy 1 helicopter visibility reduction below 1 SM NA. Straight-in Rwy 1 NA at night, Circling Rwy 1, 19 NA at night. When local altimeter setting not received, use Olney-Noble altimeter setting and increase all MDA 80 feet and increase LNAV visibility Cat C ¼ SM, and Circling visibility Cat C ¼ SM.

▲ MISSED APPROACH: Climbing right turn to 2200 direct NOFSU and hold.

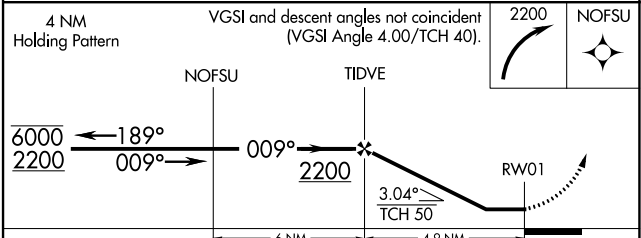
AWOS-3PT 118.375	KANSAS CITY CENTER 124.3 269.15	UNICOM 122.725 (CTAF) 0
----------------------------	---	-----------------------------------



ELEV 585	TDZE 580
REIL Rwy 11 and 29	
MIRL Rwy 1-19 and 11-29	



Procedure NA for arrivals at CRATS on V52 southwest bound.



CATEGORY	A	B	C	D
LNAV MDA	1020-1	440 (500-1)	1020-1¼ 440 (500-1¼)	NA
C CIRCLING	1020-1 435 (500-1)	1140-1 555 (600-1)	1440-2½ 855 (900-2½)	NA

EC-3, 11 JUL 2024 to 08 AUG 2024

EC-3, 11 JUL 2024 to 08 AUG 2024