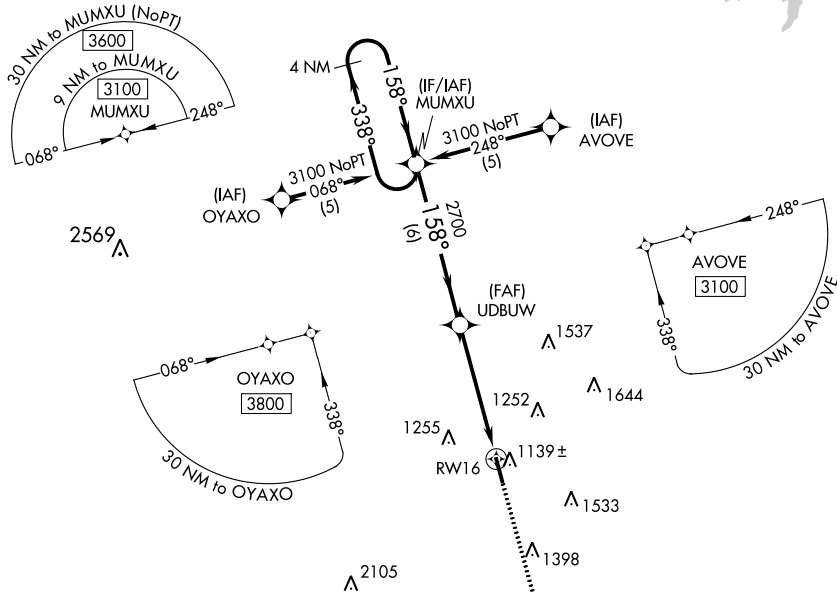


WAAS CH 56308 W16A	APP CRS 158°	Rwy Idg TDZE Apt Elev	5001 1069 1069
---------------------------------	------------------------	-----------------------------	-------------------------------------------

RNAV (GPS) RWY 16

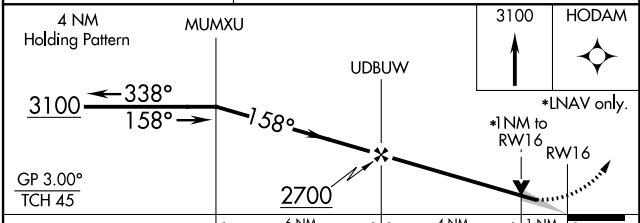
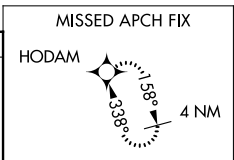
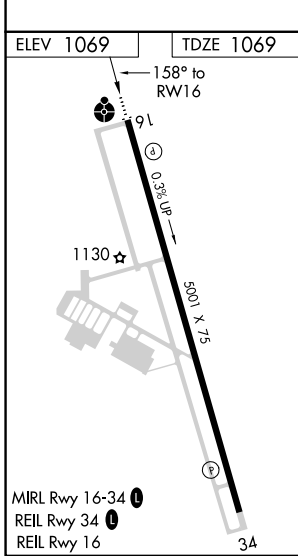
GUTHRIE/EDMOND RGNL (GOK)

<p>⚠ DME/DME RNP-0.3 NA. VDP NA when using Will Rogers World altimeter setting. When local altimeter setting not received, use Will Rogers World altimeter setting and increase DA/MDA 100 feet and LPV all Cats visibility 1/4 mile.</p>	<p>ODALS</p>	<p>MISSED APPROACH: Climb to 3100 direct HODAM and hold.</p>
<p>ASOS 133.975</p>	<p>OKE CITY APP CON 124.2 336.4</p>	<p>UNICOM 122.8 (CTAF)</p>



SC-1, 11 JUL 2024 to 08 AUG 2024

SC-1, 11 JUL 2024 to 08 AUG 2024



GP 3.00° TCH 45	6 NM	4 NM	1 NM	
CATEGORY	A	B	C	D
LPV DA	1319-1	250 (300-1)		NA
LNAV MDA	1420-1	351 (400-1)		NA
CIRCLING	1540-1 471 (500-1)	1560-1 491 (500-1)		NA