

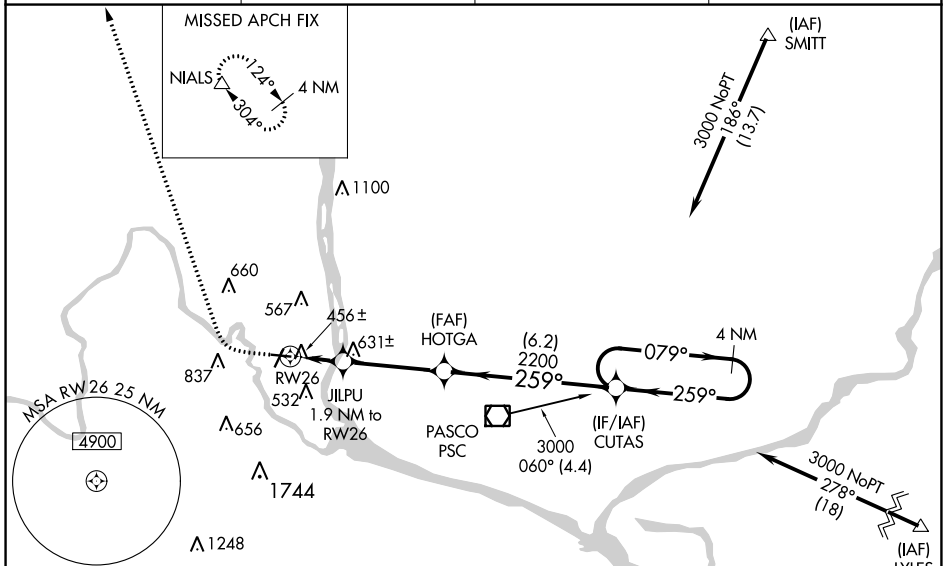
WAAS CH 77903 W26A	APP CRS 259°	Rwy Idg TDZE Apt Elev	4001 389 394
--	------------------------	-----------------------------	---

RNAV (GPS) RWY 26

RICHLAND (R.LD)

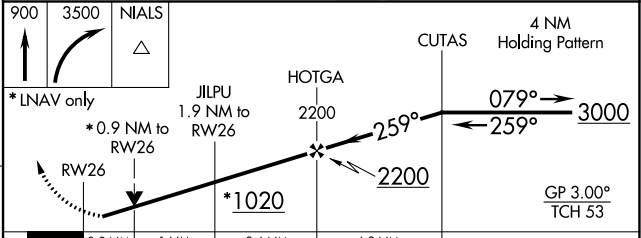
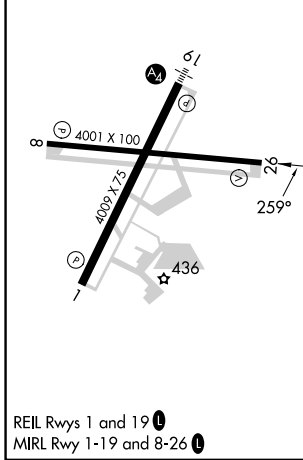
RNP APCH.		<p>⚠ NA When local altimeter setting not received, use Pasco altimeter setting and increase all DA 21 feet and all MDA 40 feet and increase RNAV/VNAV Cats A and B visibility 1/2 mile, Circling Cat C visibility 1/4 mile. Baro-VNAV NA when using Pasco altimeter setting. For uncompensated Baro-VNAV systems, LNAV/VNAV NA below -15°C (4°F) or above 41°C (107°F). Rwy 26 helicopter visibility reduction below 3/4 SM NA.</p>	<p>MISSED APPROACH: Climb to 900 then climbing right turn to 3500 direct NIALS and hold.</p>	
<p>AWOS-3PT 132.675</p>				<p>SPOKANE APP CON * 128.75 377.2</p>

AWOS-3PT 132.675	SPOKANE APP CON * 128.75 377.2	CLNC DEL 122.4	UNICOM 122.7 (CTAF) 0
----------------------------	--	--------------------------	---------------------------------



ELEV 394	TDZE 389
----------	----------

Procedure NA for arrivals at PSC VOR/DME on V187 southwest bound and on V281 southeast bound.



CATEGORY	A	B	C	D
LPV DA	657-7/8	268 (300-7/8)	657-1	268 (300-1)
LNAV/VNAV DA	639-3/4	250 (300-3/4)	639-1	250 (300-1)
LNAV MDA	720-1 331 (400-1)			
C CIRCLING	920-1 526 (600-1)	1000-1 606 (700-1)	1200-2 1/4 806 (900-2 1/4)	1940-3 1546 (1600-3)

NW-1, 11 JUL 2024 to 08 AUG 2024

NW-1, 11 JUL 2024 to 08 AUG 2024