

| | | |
|--|------------------------|--|
| VOR/DME BSV 114.05 Chan 87 (Y) | APP CRS 127° | Rwy Idg TDZE Apt Elev N/A N/A 1164 |
|--|------------------------|--|

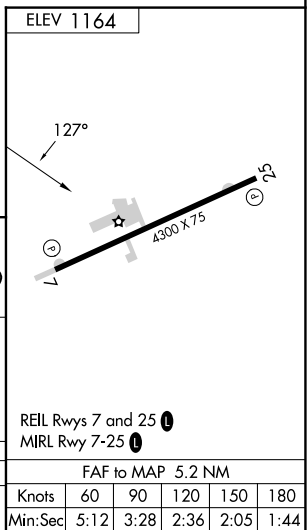
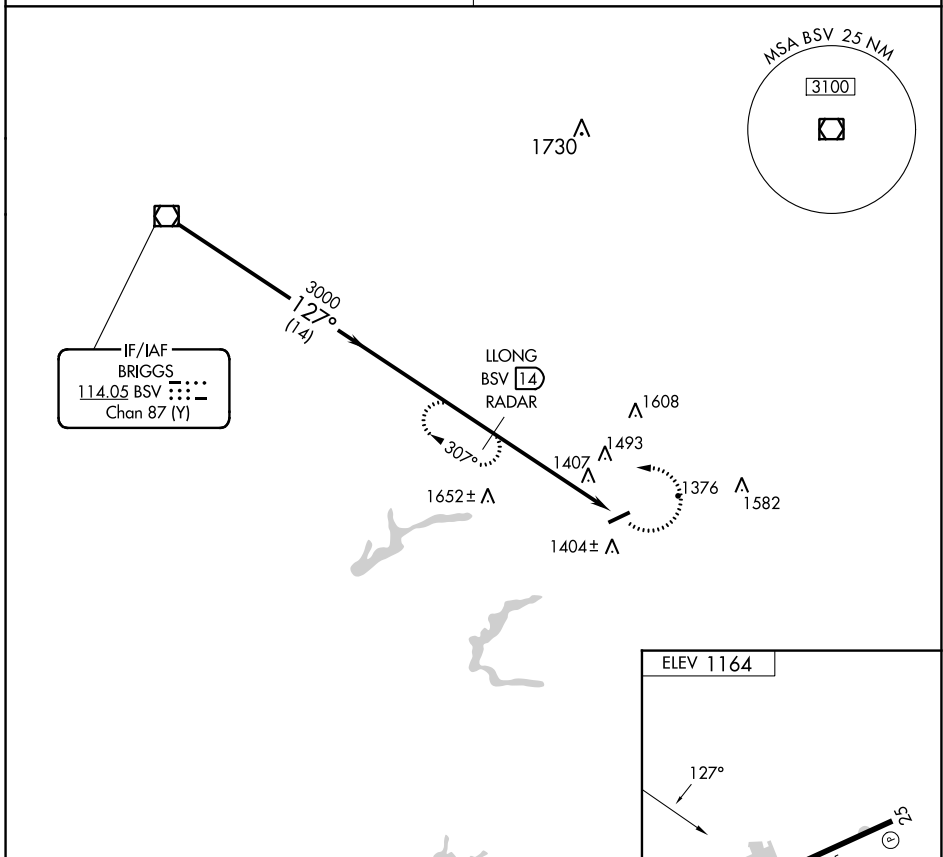
VOR-A

CARROLL COUNTY-TOLSON (T50)

| | |
|--|--|
| DME or RADAR required. | MISSED APPROACH: Climbing left turn to 3000 on BSV VOR/DME R-127 to LLONG/BSV 14 DME/RADAR and hold. |
| Procedure NA at night. Use Akron-Canton altimeter setting; when not received, use New Philadelphia altimeter setting and increase MDA 20 feet. | |

CLEVELAND APP CON ★
125.5 371.875

UNICOM
122.7 (CTAF) **1**



| | | | | | | |
|-------------|--------|-------------|------|--------------------|-------------------|--------------------------|
| BSV VOR/DME | 3000 | 127° | 3000 | LLONG BSV 14 RADAR | 3000 BSV R-127 | LLONG BSV 14 |
| 14 NM | | 5.2 NM | | | | |
| CATEGORY | A | B | C | D | FAF to MAP 5.2 NM | |
| CIRCLING | 1940-1 | 777 (800-1) | NA | | Knots | 60 90 120 150 180 |
| | | | | | Min:Sec | 5:12 3:28 2:36 2:05 1:44 |

EC-2, 11 JUL 2024 to 08 AUG 2024

EC-2, 11 JUL 2024 to 08 AUG 2024

VOR-A