

# KINGDOM FOUR DEPARTURE

REGIONAL DEP CON  
135.975 379.9  
CTAF  
122.8

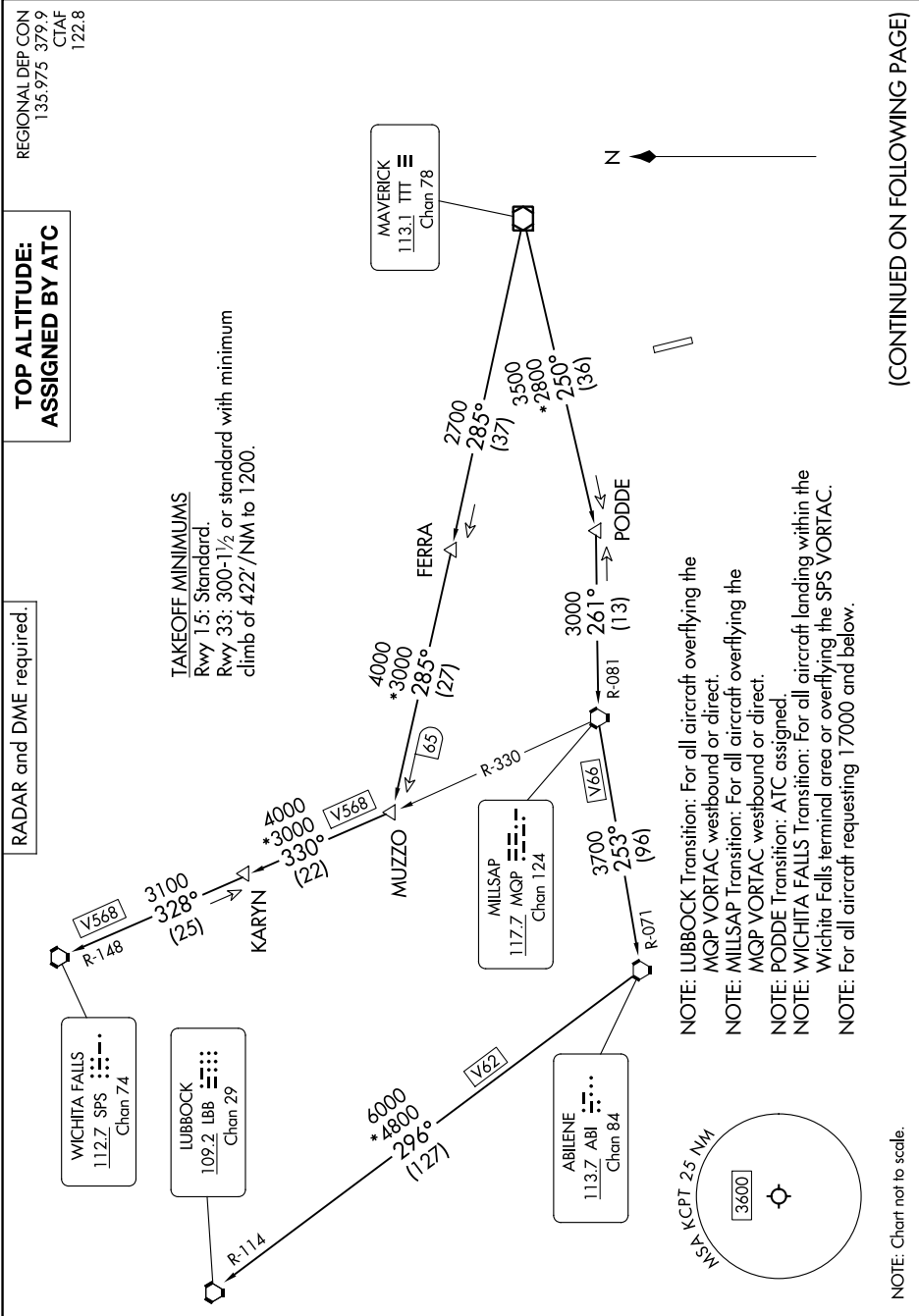
**TOP ALTITUDE:  
ASSIGNED BY ATC**

**TAKEOFF MINIMUMS**  
Rwy 15: Standard.  
Rwy 33: 300-1½ or standard with minimum  
climb of 422'/NM to 1200.

RADAR and DME required.

SC-2, 11 JUL 2024 to 08 AUG 2024

(CONTINUED ON FOLLOWING PAGE)



- NOTE: LUBBOCK Transition: For all aircraft overlying the MQP VORTAC westbound or direct.
- NOTE: MILLSAP Transition: For all aircraft overlying the MQP VORTAC westbound or direct.
- NOTE: PODDE Transition: ATC assigned.
- NOTE: WICHITA FALLS Transition: For all aircraft landing within the Wichita Falls terminal area or overlying the SPS VORTAC.
- NOTE: For all aircraft requesting 17000 and below.

NOTE: Chart not to scale.

SC-2, 11 JUL 2024 to 08 AUG 2024

# KINGDOM FOUR DEPARTURE