

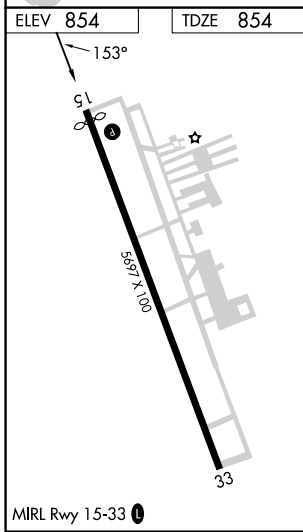
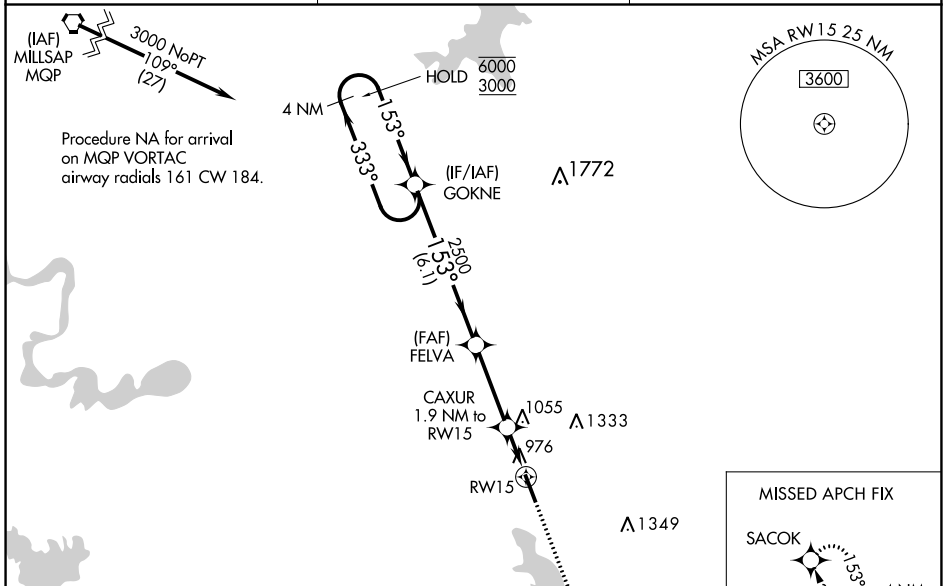
WAAS CH <b>61331</b> <b>W15A</b>	APP CRS <b>153°</b>	Rwy Idg TDZE Apt Elev	<b>5512</b> <b>854</b> <b>854</b>
--	------------------------	-----------------------------	---

# RNAV (GPS) RWY 15

CLEBURNE RGNL (CPT)

RNP APCH.	MISSED APPROACH: Climb to 3000 direct SACOK and hold.
<p>▼ For uncompensated Baro-VNAV systems, LNAV/VNAV NA below -16°C or above 54°C. Rwy 15 helicopter visibility reduction below ¾ SM NA.</p> <p>▲</p>	

AWOS-3 <b>119.525</b>	REGIONAL APP CON <b>135.975 379.9</b>	UNICOM <b>122.8 (CTAF) 0</b>
--------------------------	--	---------------------------------



ELEV 854	TDZE 854	4 NM Holding Pattern GOKNE		3000	SACOK
<p>6000 ← 333°</p> <p>3000 → 153°</p> <p>GP 3.00° TCH 39</p>		<p>FELVA 2500</p> <p>CAXUR 1.9 NM to RWY 15</p> <p>RWY 15</p> <p>*LNAV only.</p>		<p>*1480</p>	
		6.1 NM		3.2 NM	
		1.9 NM			
CATEGORY	A	B	C	D	
LPV DA	1240-1 <sup>3</sup> / <sub>8</sub>		386 (400-1 <sup>3</sup> / <sub>8</sub> )		
LNAV/VNAV DA	1397-1 <sup>7</sup> / <sub>8</sub>		543 (600-1 <sup>7</sup> / <sub>8</sub> )		
LNAV MDA	1360-1	506 (600-1)		1360-1 <sup>3</sup> / <sub>8</sub>	506 (600-1 <sup>3</sup> / <sub>8</sub> )
<b>C</b> CIRCLING	1400-1	546 (600-1)		1680-2 <sup>1</sup> / <sub>2</sub>	1700-2 <sup>3</sup> / <sub>4</sub>
				826 (900-2 <sup>1</sup> / <sub>2</sub> )	846 (900-2 <sup>3</sup> / <sub>4</sub> )

SC-2, 11 JUL 2024 to 08 AUG 2024

SC-2, 11 JUL 2024 to 08 AUG 2024